



idecin.cz

TOURIST MAGAZINE

DĚČÍN IS DIVINE

Browse your holiday photos in style ;)

Děčín swag is available at an info center near you.



Meet the team.

Děčín tourism

DĚČÍN FOR ACTIVE RECREATION

365 days
And never a dull moment

135 m n.m.
Lowest lying city in CZ



The lowest lying city on the Elbe is an ideal spot for relaxation and recreation. Located near Bohemian Switzerland National Park, it makes a great jumping off point for adventures and daytrips into the gorgeous countryside with romantic settings, panoramic views, and massive cliff formations. Adrenalin, landmarks, river trips, the zoo, swimming, or just relaxing over a glass of wine or a cup of coffee – these are just a few of the pleasures the city can offer.

Active families will find their fill of activities right here in town. The more daring can head for the *via ferrata* anchored climbing trails that climb 100 meters up the cliff in the heart of town. Climbers are rewarded with fantastic views of the city, the castle, and the deepest sandstone canyon in Europe. There are 16 *via ferrata* routes of varying degrees of difficulty leading to the cliff top. Experienced instructors can guide you. Just make an appointment at the visitor information center. You can also rent a raft and see the Elbe canyon from the river. Complete your trip with a return by bike on the Elbe bike trail. The information center staff can help make arrangements.

On hot summer days take a break at the zoo. It's set in the woods on the ridge above the town center. While you're up there, stop for a bite at the panoramic restaurant at the edge of the bluff.

Děčín Castle is worth a visit. Indulge yourself in a tour with the black knight, see the castle grounds, and hang out with the peacocks. Perched on its rock in the center of town, the castle, with its unique long drive and gorgeous rose garden is a must-see for any visitor to Děčín.

Film buffs come into their own here too. Plenty of films have been shot in the area: *The Chronicles of Narnia* in nearby Tisá, *the Little Mermaid*, and several American action movies. The mysterious ruins of Dolský Mlýn mill have lent themselves as a backdrop to several local films, such as *The Proud Princess*.

TIP!

VISIT OUR INFO CENTERS TO GET SORTED WITH LODGING, DAYTRIPS AND MORE.



DĚČÍN VISITOR INFORMATION CENTERS

LIBRARY

Karla Čapka 1441/3
405 02 Děčín
+420 412 532 227
info@idecin.cz

MAIN STATION

Čsl. Mládeže 89/4
405 02 Děčín
+420 727 975 773
info@idecin.cz



www.idecin.cz/en

DĚČÍN HAS TONS TO OFFER, UNBEATABLE NATURAL SCENERY AND ACTIVE ADVENTURES. COME SEE FOR YOURSELF. YOU WON'T BE SORRY.

Big three bike trip!

Jump on your bike and come for a ride! You'll see one of the Czech Republic's oldest observation towers and one of Europe's largest hilltop fortresses, and the route takes you through the best part of the Elbe canyon.



ROUTE LENGTH
60 KM

DIFFICULTY
MEDIUM
DIFFICULTY

TOTAL CLIMB
1600 M

RECOMMENDED EQUIPMENT:
Camera, plenty of fluids, pocket money (crowns and euros)

BIKE AND ELECTROBIKE RENTALS:
Cyklopujcovna.com, Czech Railways bike rentals at Děčín main station

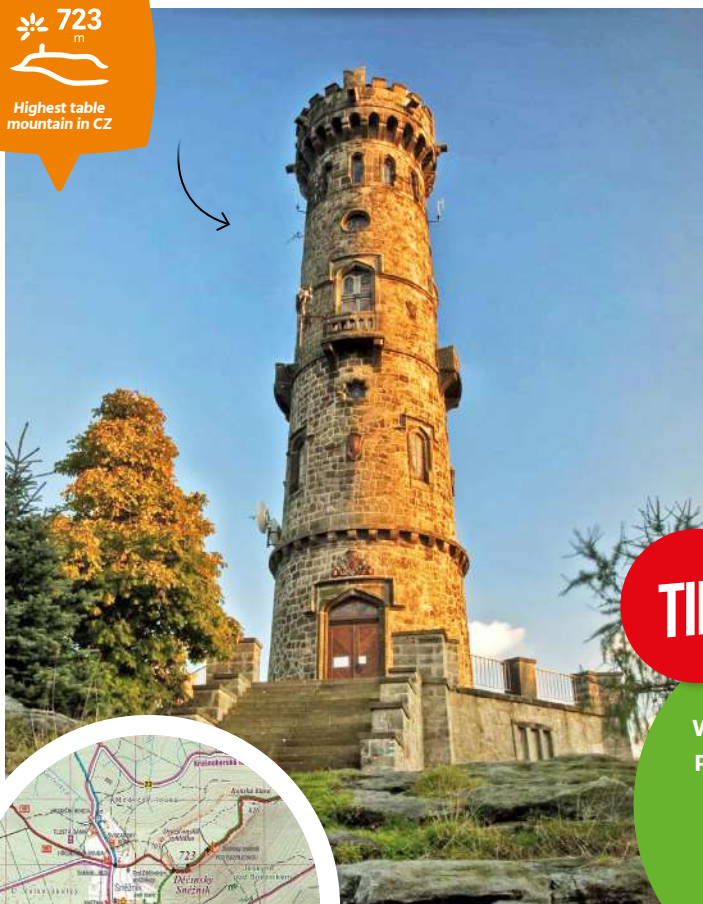
www.cyklopujcovna.com



212 M ABOVE SEA LEVEL



723 m
Highest table mountain in CZ



TIP!

WANT TO SAVE YOUR PEDAL POWER? TAKE BUS 433 (WITH YOUR BIKE) TO THE TOP OF SNĚŽNÍK

START OFF FOR SNĚŽNÍK

Our bike tour starts in Děčín, continues for 15 km along the Ore Mountains bike route (no. 23) with a steady climb up to the village of Sněžník. The route follows a paved road through the woods, sheltered from the hot sun.

If you don't feel up to the climb, you and your bike can hitch a ride on bus no. 433 to Děčínský Sněžník. Buses leave from the main bus station in Děčín-Podmokly. You'll get off a little below the watchtower (Jílové – Sněžník – Hraničář restaurant). From there it's an easy 2 km ascent to the stone lady herself... a 33-meter watchtower that's one of the oldest in the Czech Republic and lies on the highest table mountain in the country – Děčínský Sněžník. The tower commands a wonderful view of Bohemian Switzerland, and on a good day you can see as far as Dresden, Jedlová, Ještěd, Sněžka, Milešovka, and even Říp.

ON TO KÖNIGSTEIN

After taking in the view and grabbing a bite at one of the numerous restaurants below the watchtower, it's time to continue on towards the German border town of Rosenthal-Bielatal. After a short ride along a paved trail, you'll arrive in this charming village with its pretty little houses and well-kept gardens. From here the route continues downhill. Follow signs for Königstein and after a brief descent the great fortress comes into view, the largest militarily fortified castle in all of Europe!

Practicalities:

The fortress is open from April through October from 9am to 6pm. The rest of the year until 5pm. Adults pay 10 euros admission to the whole complex, 8 euros in the winter. There is a 3 euro surcharge for audio guides. Further details are available online.

www.festung-koenigstein.de/en

THE ELBE CANYON BACK TO DĚČÍN

Once you've toured the fortress, or at least looked it over from the outside, you can continue back to Děčín with a 25-kilometer ride along the Elbe cycling route (no. 2). This asphalt trail follows a level course along the river Elbe. Be warned, by the time you dismount at the end, your neck may be a bit sore from gazing up at the scenery and the cliff faces that line the length of the route.

You'll see the spa town Bad Schandau with its thermal springs on the other side of the river. After the border crossing at Schmilka there's Hřensko, an immensely popular tourist destination. Then comes Dolní Žleb with its ferryboat and the charming restaurant Dolní Grund, which has a large, comfortable terrace with a terrific view of the river.

From Dolní Žleb, it's only a few kilometers to the end of the line in Děčín. This final leg offers views of the magnificent cliff formations on the opposite bank – Belvédér, Labská Stráž, and more.

i

Most popular bike trail in CZ

Practicalities:

The tower is open daily in the summertime from 9am to 7pm and during the rest of the year from 10am to 5pm, except for November to March, when it is open only on weekends and holidays from 10am to 4pm. Admission is 30 CZK; students and children over 5 pay half.



TIP!

GET TIPS FOR BIKE TRIPS IN THE DĚČÍN AREA FROM THE DEDICATED BROCHURE IN THE INFO CENTER.

Biking in Děčín is loads of fun. More information on biking tips is available on the Děčín visitors website.





Daytrips & Adventures

Gorgeous Elbe Canyon views

ITINERARY

**DĚČÍN HOSPITAL –
QUADERBERG 1 KM – ELBE
VIEWPOINT 2 KM – NAD
LOUBÍM, SIGNPOST
4 KM – SPÁLENISKO,
VIEWPOINT 5 KM – RŮŽOVÝ
HŘEBEN, VIEWPOINT 6 KM –
BELVEDÉR 11.5 KM – LABSKÁ
STRÁŇ 12 KM – SUCHÁ
KAMENICE VALLEY 14.5 KM –
SUCHÁ KAMENICE, ÚSTÍ 17 KM
– RIVERSIDE HŘENSKO 18 KM**

This scenic walk starts at the final stop (Děčín Nemocnice) on city bus 201 and 207 following the red trail into the park across the road. A paved path leads up to the panoramic terrace and sandstone obelisk at the top of the Quaderberg bluff. The spot offers a great view of the city and the Elbe canyon. From here the red trail sets off along the ridge. It's an easy walk to the views at Sněžnická vyhlídka and the stone pavilion Labská stráž. The red trail continues along the ridge over the Loubí valley with its sandstone cliffs and rock formations. The path descends to the village of Ludvíkovice. There it skirts the village cemetery and meets the green trail at a signpost marked Nad Loubím.

The trail continues and then climbs a wooded slope to a sandstone shelf over the river. Then it goes on to the crossroads at Růžový hřeben. From here a short detour of 300 m leads to a gorgeous panoramic viewpoint overlooking wonderful sandstone formations. The viewing area, Růžová vyhlídka, has a railing and a bench.

The red trail traces a level course through the forest, taking hikers along the plateau above the village of Labská Stráž. Soon the path arrives at Belvédér, the oldest man-made viewing terrace in Bohemian Switzerland. This cliff-top terrace was built in the 18th century for outdoor concerts and offers amazing views of the river 180 m below. A hotel near the terrace has a restaurant, offering a welcome break for hungry travelers. The red trail leads to Labská Stráž and descends into the enchanting Suchá Kamenice canyon, ending at the road to Hřensko. This is where the journey ends. Hikers can return to Děčín by bus, boat, or train.

300 m
Europe's deepest sandstone canyon



TRIP TIME
7 HOURS

Trip duration, including lunch

RIVERBOATS



www.labskaplavebni.cz



HŘENSKO-SCHÖNA FERRY



www.hrensko.cz

Vlakem zpět Schöna - Děčín

BUS SCHEDULE



www.kr-ustecky.cz

From the Elbe valley to the top of the world

You can't take two steps in Bohemian-Saxon Switzerland without running into another sandstone cliff, so it's no wonder that this stretch of the Elbe valley is home to a number of outstanding mountain climbers. And Jindřich Hudeček, founder of HUDYsport, numbers among them.



NERVE AND STYLE

Equipped with a nautical rope and three carabiners, Jindra attacked increasingly tough ascents. The makeshift equipment of the time made climbing a pure adventure, where the climber had to prove himself not just physically, but mentally. There was a tendency to choose really difficult routes that were near impossible to secure. The smallest mistake could mean serious injury, or worse. Hudy was never short on nerve, and even today he takes on climbs where the fear factor is high. Climbing isn't just about performance, it's the adventure. Jindra never focused too much on building muscle, and never spent much time on artificial walls or even in the gym. He has a natural feel for movement on the rocks, so that what he lacks in strength, he makes up for in precision and determination. That's how he conquered a series of tough ascents, up to level XIc, in the 1980s and 90s. Now over fifty, he hasn't lost his touch. He can still show young climbers some sandstone finesse.

FROM SAND TO MOUNTAINTOP

In 1983 Jindra made the Czechoslovak climbing team and set off for parts unknown. He made a splash right away on a winter trip to Slovenia, where he and Míra Mikyška nailed their ascent of the northern face of Triglav, a feat that went unmatched for 20 years. From Europe he headed to North America, where, like Míra Šmíd, the excellent mountain climber and founder of the International Mountaineering Film Festival in Teplice nad Metují, he threw himself into solo climbs in Yosemite National Park. He chose the legendary Nose on El Capitan, more than a kilometer high. He took the cliff face with just two bivouacs and minimal gear, taking on the easier segments unroped.

In 1987 Hudy tried for his first ascent on Mount Everest, and reached an elevation of 8300 m. But he never returned to the high mountains, redirecting his efforts to another discipline – competitive climbing. He soon numbered among the world elite, taking one scalp after another. In 1989 and 1990 he brought home the first Czech medal from the world championships, where he placed tenth overall. When he wasn't competing, he began to climb more limestone areas, where he again ranked among the best. Heinz Zak dedicated a chapter to him in his book Rock Stars.



Jindra, whose friends know him as Hudy, grew up in Jílové, a small town just outside of Děčín, where the cliffs are just a stone's throw away. He cut his teeth on amateur ascents with friends on the bluffs of the Elbe river valley. But the young talent was soon noticed by experienced climbers Zdeněk Weingartl and Karel Bělina. Under their wing Hudy started to climb regularly and soon advanced from elementary level II and III climbs to the tougher VIIb and VIIc ascents.

SUCCESS IN BUSINESS

After the Velvet Revolution, Hudy threw himself into business and in 1990 opened his first outdoor equipment shop in Hřensko. Under the communist regime it had been tough getting one's hands on quality equipment and lots of people made their own gear, so there was a demand just begging to be met. The years that followed confirmed that Hudy's instincts had been right. That one small shop grew into a network of 39 specialized stores covering the Czech Republic and Slovakia.

The backbone of HUDYsport today is its three hundred employees, most of whom head to the hills whenever they find the free time. They put their wares to the test in real life and are truly experts in their field. Their experience serves them well in business and in product development for house brands Direct Alpine and Rock Empire.

THE WIND IN HIS HAIR

When he wasn't doing business, Jindra spent the 90s pursuing his dreams in sports that (like climbing) are spiked with a hefty dose of adrenalin. He threw himself into motorcycle racing, racecar driving, and base jumping.

But he never left the cliffs behind. Every year he heads for Patagonia, where he has completed a number of tough ascents. In 2011, along with Standa Štěpán, and Michal Brunner, he climbed the stunning granite needles Cerro Torre and Fitz Roy. In 2015 he and Michal Brunner completed a first ascent on Aguja Poincenot and the very next season, with Radek Groh, the first Czech winter ascent on Fitz Roy.

And he's not letting the years slow him down. Hudy travels the globe in pursuit of rock climbing adventures. But he always circles back to where it all began. The Elbe sandstones are just in his blood.





OPENING HOURS
DAILY 9AM – 5PM

TIP! SUMMER
HOURS TO
6PM

BETTER EVERY YEAR

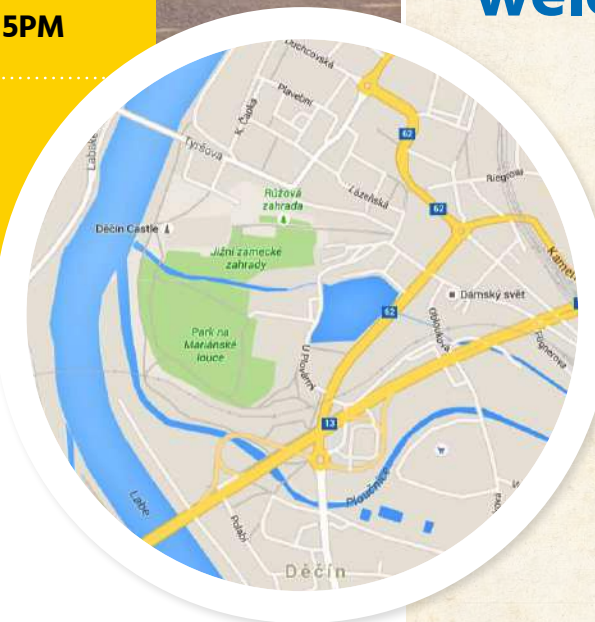
The castle's A VISIT WITH FRANZ THUN tour has expanded to include a fragment of the original Thun library collection. The books were recently restored to their place at the castle after many years. Under the Thun-Hohenstein family the library numbered almost 90,000 volumes, with three hundred manuscripts and 80 first editions.



www.zamekdecin.cz



/zamekdecin



Culture

Děčín Castle welcomes you



ONE OF THE OLDEST

The castle is one of the oldest heritage sites in the Czech Republic – the earliest written reference to the original wooden fortress dates to 1128. With 150 rooms, it is also one of the largest castles in the country. More people make their way here every year, making it the single most visited castle in the Ústí region with a total of 66,000 paying visitors in 2017.

FIVE CASTLE TOURS

The BAROQUE TREASURES tour takes visitors to the rose garden and the Church of the Holy Cross. THE GOLDEN AGE tour and A VISIT WITH FRANZ THUN explore the private chambers of the west wing. The COUNTESS welcomes the castle's littlest visitors and the fearless can explore the cellars with THE BLACK KNIGHT Sigmund von Wartenberg.



292 m
Longest
castle drive



CASTLE GARDENS

Nature lovers come into their own in the castle gardens. On the north side lies a lovely, Baroque rose garden, one of the artistic highlights of the castle grounds. The terraced gardens on the southern slope were esteemed in the past for their outstanding collections of orchids, camellias, azaleas, and rhododendrons.

HARD TIMES AFTER 1932

In 1932 the Thuns sold the castle to the Czechoslovak state and it was converted into army barracks. Over the next sixty years a series of armies were quartered here. Finally, in 1991, the castle came into the ownership of the city of Děčín and the costly process of reconstruction began (650 million Czech crowns so far).



CASTLE V.I.P.S

The castle was visited by Frederic Chopin, who composed his Děčín Waltz here. Another eminent guest was the young Empress Sisi, who accompanied her new husband Franz Joseph I to the castle in 1854. It was her debut in the role of Imperial spouse. Other notables who spent time at the castle were František Palacký and the Mánes brothers.



Dining and sleeping in French style

Enjoy a romantic stay at the charming guesthouse U Růžové Zahrady. Eclectic interiors and excellent cuisine satisfy discriminating travelers.



THE MARRIAGE OF HISTORY AND MODERN CUISINE KEEPS VISITORS COMING BACK



TIP!

DĚČÍN IS AN IDEAL BASE FOR VISITS TO THE BOHEMIAN-SAXON SWITZERLAND PARKLANDS AND DAYTRIPS TO HISTORIC DRESDEN (SEE THE SISTINE MADONNA AT THE ZWINGER, FOR INSTANCE). THE SWIMMING POOL, THE VIA FERRATA, AND THE RIVERBOAT DOCK ARE WITHIN EASY WALKING DISTANCE.



The menu features French specialties and Bohemian cuisine. Items can be made to customer specifications. Live jazz nights take place occasionally.

COME BY FOR BREAKFAST

THE LORENCES

Design enthusiasts, the proprietors are great hands at decorating for a special occasion or a private party. And their creative work on interiors extends beyond their restaurant and inn. They have an interior décor shop in the same building (built in 1892). Two model apartments (77 sq m) are also available for viewing.

The restaurant interior is eclectic. And the kitchen is open, allowing diners to see how their meals are prepared. A special breakfast menu helps get the day off on the right foot.



This little inn is just across from the Church of the Holy Cross in the pedestrian zone below the castle. The location lends it a unique atmosphere. Visitors will bring home memories of time spent relaxing on the summer terrace with a view of Děčín Castle and its rose garden, the sala terrena, the gloriette, the Long Drive, and the church (a pilgrimage site since 1752, when it acquired from Rome a painting of the Virgin Mary blessed by Pope Benedict XIV).



www.uruzovezahrady.cz

U RŮŽOVÉ ZAHRADY

Křížová 17/15 / 405 02 Děčín 1
+420 702 994 622



Food & Lodging

YOU'LL FIND PEACE AND QUIET.

A great breakfast at



COFFEE
&
BOOKS

místo lidských setkání

Coffee & Books is a family-run café. Our specialty is you – our guests. We like you and we want you to feel at home here. We're not a chain... we're locals, and we like it that way. We use ingredients from local producers—bread and coffee from Děčín, smoked meats from Litoměřice, cider from Rumburk, beer from Varnsdorf. We serve a selection of breakfasts all day, both sweet and savory, that you can wash down with plenty of great coffee. Start your day with delicious scrambled eggs, sourdough bread with butter, and cider, or our one-of-a-kind *chlebich*—a toasted slab of bread with ham, prosciutto, sun-dried tomatoes, and arugula. Croissants with jam or hazelnut spread. Or hot, crispy waffles with whipped cream, jam, or ice cream. We also have yoghurt parfaits with fresh fruit and homemade granola.

HOURS

MON – FRI 7AM – 8PM
SAT 8AM – 8PM
SUN 9AM – 6PM



We're not a pastry shop, but we do make most of our own desserts. Try the *čokomaus* with Belgian chocolate mousse, our house cheesecake, some real Wyoming carrot cake... come and see for yourself. And those ice cream sundaes... mm mm. Guaranteed by our sweet tooth.

CAN'T WAIT TO SEE YOU :)



A glass by the castle



vinotekadecin

Vinotéka Děčín has a long tradition and a wide range of Bohemian and Moravian wines.



OUTDOOR TERRACE OPEN IN SUMMER MONTHS



www.vinotekadecin.cz

VINOTÉKA DĚČÍN
Křížová 435/9
405 02 Děčín 1
novotnadc@seznam.cz

OUTDOOR TERRACE
OPEN IN SUMMER
MONTHS

Most of our Bohemian wines come from local vineyards in Malé Žernoseky, Velké Žernoseky, Louny, Žalhostice, Třebívlvice, Roudnice nad Labem, and Mělník. Our Moravian wines represent roughly 35 vineyards from across Moravia. We also have select wines from Chile, Argentina, New Zealand, Mexico, the USA, South Africa, Romania, and Bulgaria.

We offer twice-monthly wine tastings with a guest winemaker. We also host regular tastings for varietal wines.

In the summer months we open a shaded outdoor seating area in the pedestrian zone just below the castle rose garden. We also serve excellent local coffee from Caffé08.



WATER TEMP
28° :)



Daytrips & Adventures

Aquapark Děčín

This modern recreational sports complex with a natural thermal water source is one of the largest in the Czech Republic.

Děčín's aquatic park is just off the Elbe cycle route. It offers visitors a unique combination of indoor and outdoor attractions. Indoors are a 25-meter pool, a learners' pool, 3 toboggans, a water mushroom, a lazy river, spouts and geysers, massage jets, 2 whirlpools, a wading area, and a restaurant. Upstairs are a wellness center with saunas, a club area with a private sauna and jacuzzi, a massage area, a solarium, a gym, and an outdoor terrace.

The park's outdoor attractions include 50- and 25-meter pools, a recreational pool with attractions, a massage bench, a lazy river, a wading area, and a stainless steel water polo pool with a 6-meter diving well. A natural thermal water source means that the outdoor 25-meter pool is open year-round with water temperatures of around 28°C.

The outdoor area also includes a children's play area and a sports area with two beach volleyball courts that can also be used for beach football, a football tennis court that doubles for basketball and can hold two pick-ups at once, and pétanque.

HOTEL AQUAPARK DĚČÍN

The hotel at Aquapark Děčín offers lodging with top-notch service, reasonable prices, and a great base for daytrips and recreation.

Aquapark Děčín
Oblouková 1400/6
405 02 Děčín IV
+420 412 704 211
info@dcsportovni.cz



www.aquaparkdecin.cz





Daytrips & Adventures

Děčín Zoo

Although Děčín Zoo is one of the smallest in Bohemia, visitors consistently rate it as one of the nicest.

The zoo occupies six hectares of land on the wooded slopes of Shepherd's Bluff (Pastýřská stěna). It focuses primarily on endangered and lesser-known species. There are almost 450 animals here representing 150 species.

Visitors will encounter many interesting creatures: the giant anteater, the clouded leopard, the vicuña llama, the Mishmi takin, the South American tapir, the Visayan warty pig, the West Caucasian tur, the maragay, the crested black macaque, the Canadian porcupine, Prince Alfred's spotted deer, the red-necked wallaby, the fishing cat, and many others... Popular attractions include the bird house and the local fauna exhibit. A walk through the zoo can be a great family outing, thanks to an abundance of interactive and educational elements. There are learning trails, plenty of play stations, a big jungle gym in the shape of a castle, and a petting zoo.

OPEN DAILY YEAR ROUND!



MAY – AUG

HOURS

8AM – 7PM

SEPT, OCT, MAR, APR

HOURS

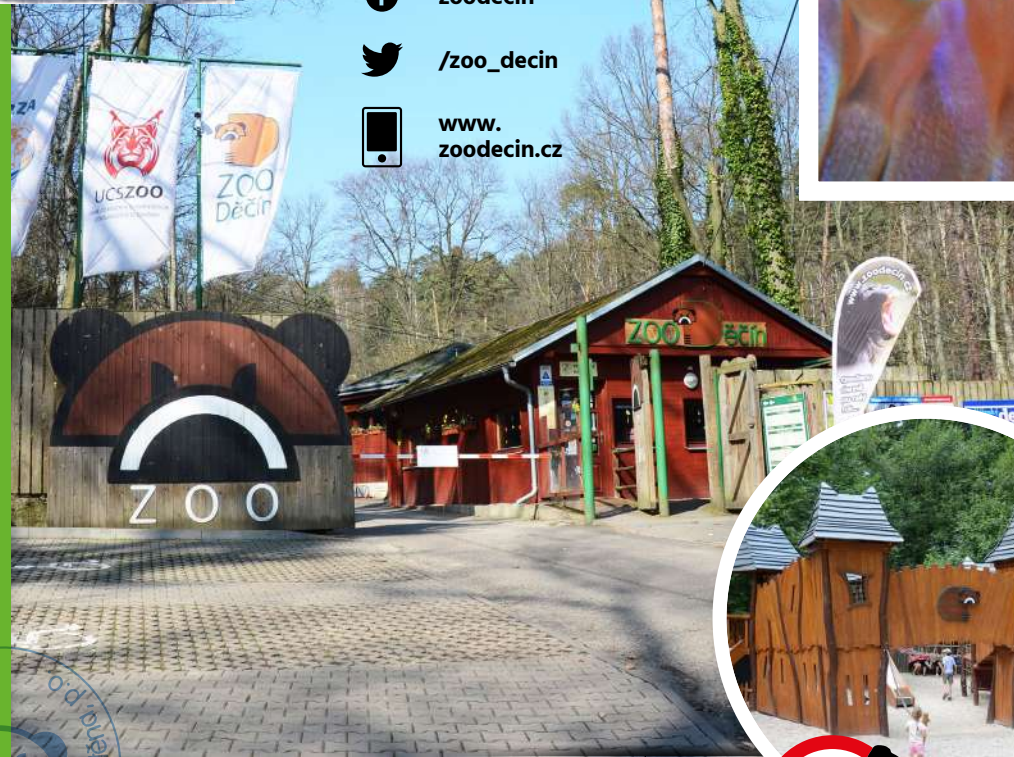
8AM – 6PM

NOV – FEB

HOURS

8AM – 4PM

**Zoologická zahrada Děčín
- Pastýřská stěna, p. o.**
Žižkova 1286/15 / 405 02 Děčín IV
+420 412 531 164 / info@zoodecin.cz



**DOGS AND OTHER PETS
ARE NOT ALLOWED
IN THE ZOO, WITH
THE EXCEPTION OF
ASSISTANCE DOGS.**

PARADISE ISLANDS EXHIBIT



MAY – AUG

HOURS

DAILY 9AM – 7PM

SEPT – APR

HOURS

DAILY 9AM – 6PM

Expozice Rajské ostrovy
Teplická 19 / 405 02 Děčín IV
+420 412 531 531 / tic@zoodecin.cz



zoodecin



/zoo_decin



www.
zoodecin.cz

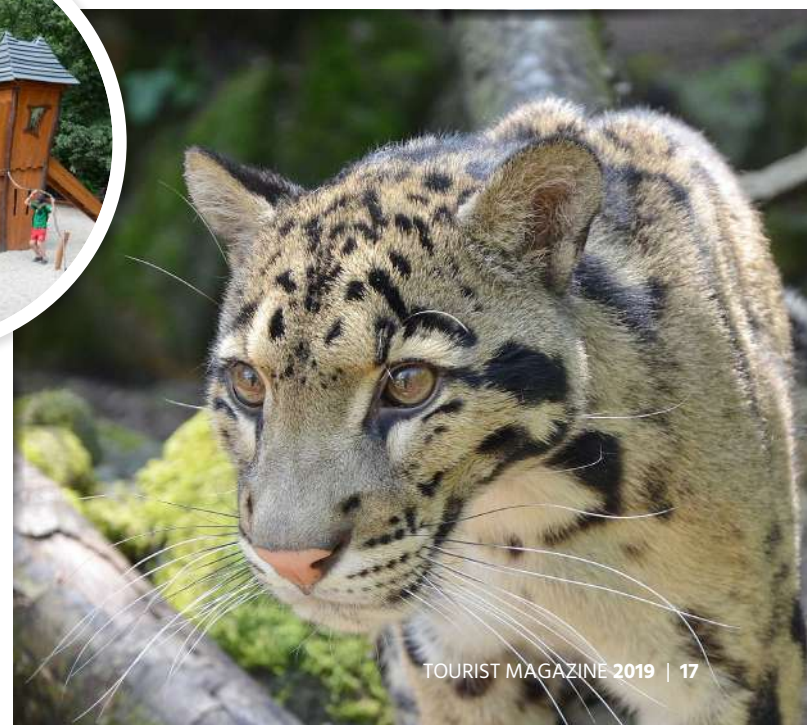
TIP!

**ZOO VISITORS GET
FREE ENTRY TO THE
PARADISE ISLANDS
EXHIBIT!**



f /expozicerajskeostrovy

With your zoo ticket, you can visit the Paradise Islands exhibit (Rajské ostrovy) at no extra charge! The offer is valid on the day of your visit to the zoo. It works the other way around too; if you start your day with a visit to Paradise Islands and then continue to the zoo, you'll pay only the difference in admissions at the zoo gate.



Fun and learning at the museum

AFRICAN SUMMER AT DĚČÍN MUSEUM



www.imbrova.cz/english



The culture of the African continent remains exotic to most Central Europeans. It's a fact that makes the story of Děčín native, humanitarian Ignatius (Zdeňek Jan) Arnož (1885-1950), all the more unusual. Arnož spent the greater part of his life in Africa and stood at the establishment of the Bishopric in Bulawayo, Zimbabwe. His story is the subject of a new exhibit at Děčín Museum.

The exhibit includes a collection of African jewelry and statuary on loan from Dr. Marie Imbrová (www.imbrova.cz/english). The former diplomat and collector of African art is the founder of the Friends of Tengenenge Club, which supports Zimbabwe's world-renowned artists' community. The installation includes space for a range of other personalities from the Děčín area to present their experiences in Africa. Their stories shed light on the diversity of contemporary Africa, still a mysterious continent for many of us. The summer program will include lectures, film screenings, African music, dance, and a food festival.



JANUARY – APRIL

HOURS

WED – SUN 9AM – 5PM

MAY – AUGUST

HOURS

TUES – SUN 10AM – 6PM

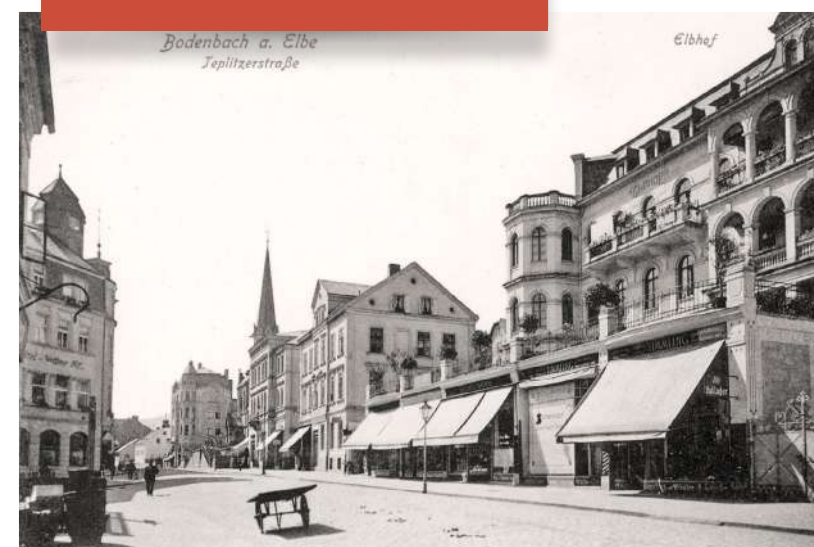
SEPTEMBER – DECEMBER

HOURS

TUES – SUN 9AM – 5PM



www.muzeumdc.cz



FORGOTTEN PODMOKLY - BODENBACH

This spring a new exhibit opens to the public. Its focus is Podmokly (German: Bodenbach), once an independent township, now the left bank part of Děčín. The area experienced a boom in industrial development after the completion of the Prague-Dresden rail line in 1851. The rise of Podmokly as a modern commercial town (1901 – 1942) outpaced the older Děčín in many respects. The local rivalry between the two towns benefited the development of the region. How well the independent township of Podmokly fared at the time is reflected in its original architecture. The exhibit showcases the day-to-day life of the town through preserved samples of local products and the presentation of its social life, clubs, and events.



THUN, Sr. W.



PERMANENT EXHIBITS

The Děčín District Museum offers visitors a look at a cross-section of its fine collections in its quarters in the historic building of the Thun-Hohenstein hunting chateau, which dates from the early 18th century. It is the only museum in the country with an exhibit dedicated to the development of water traffic on the Elbe. Exhibits reach into the city's most distant past, and include artifacts from archeological digs.

THE COURTYARD LAPIDARIUM

The museum courtyard is home to a statue garden, or lapidarium, where visitors can view sculptural relics from Děčín's fallen monuments. Of special interest are a stone carving of the emblem of the lords of Bünau dating from the 16th century, a grave marker for Count Lev Thun, an absolution cross made in the 15th century, and remnants of columns from Děčín's Loreto chapel. A central place is occupied by a Renaissance portal, removed here when the restaurant on Quaderberg was demolished. It frames a statue of Arion of Corinth from the now defunct Dolní Žleb spa. The collection includes stone family crests, border markers, and mill wheels. A huge, metal statue of Lenin stands in the lapidarium rear section, a reminder of the not so distant past.



Dozens of models present the development of watercraft construction on the Elbe in a completely refurbished exhibit dedicated to the history of Bohemian water traffic. New information has been incorporated into the installation and the original exhibit expanded to create an experience unparalleled in the Czech Republic.

Visitors will learn about the development and growth of shipping over the centuries, waterway engineering, and the natural environment in the river valley. The installation introduces important milestones such as the introduction of the steam engine, the creation of the Elbe waterway authority, and modern construction, and looks at the importance of water transport as a whole. History comes to life in images from the museum archives and private collections enhanced with text.

The museum library contains one of the largest collections of material on water traffic and a vast photographic archive of river craft, historic waterways maps for the Elbe and Moldau rivers, construction plans and blueprints, and a wealth of original items documenting this form of transport.



BESKYDY TUGBOAT TOURS

LAST SATURDAY OF THE MONTH,
APRIL THROUGH OCTOBER

Děčín Museum offers occasional tours of the rear-paddle-wheeler Beskydy. In partnership with the boat's owner, the Waterways Authority of the Czech Republic, the project presents a living technological landmark, right on the river Elbe. Dates and docking locations can be found on the museum website.

DEVELOPMENT OF ELBE SHIPPING



TOWN ON THE MEADOW

The Town on the Meadow exhibit introduces visitors to the earliest history of Děčín. Long-term research based on excavations in the 1980s on the meadow below Děčín Castle have enabled archaeologists to document the town's first settlement. The exhibit presents findings from original research into the medieval town, founded in the mid 13th century and abandoned less than a century later, when the populace moved to the other side of the castle rock in Děčín. In addition to artifacts from the digs, there is a reconstruction of the settlement itself, its houses and streets, which sheds light on the earliest years of Bohemian settlement as it has not been preserved elsewhere.



Rumburk Museum exhibits

The Děčín District Museum branch in the northern city of Rumburk has magnificent collections of its own. In 2017 an entirely new exhibit opened to visitors on the museum's second floor.

Museum visitors step outside of the everyday into an immersive exhibit, Fragments of History, that transports them into the salon of Rumburk's Stradal family, a renowned meeting place in its day, where they encounter rare items related to composer Franz Liszt. They can also hear local legends from the innkeeper at Tolstein castle and view archaeological finds.



THE MUSEUM BUILDING IN RUMBURK



The works of Krásná Lípa painter August Frind bind the exhibit together. Frind was a master of composition, faithfully rendering the stark reality of the day in all of its detail.

Frind

In the Granite Landscape of Šluknov exhibit, museum visitors step back in time 600 million years to trace the geological history of the Šluknov area.

The shores of the region's largest pond, the nature preserve Velký Rybník, are the subject of the Treasure in the Reeds exhibit. Velký Rybník and nearby Světlík form a major ornithological area.

Mysterious Dolský Mlýn

Stamping ground for fairytale characters of all stripes.

In the heart of the national parklands, not far from the tiny village of Kamenická Stráň, lies Dolský Mlýn mill. The old mill stands where the Kamenice and Jetřickovická Bělá rivers meet. The ruins are the scene of an area legend, re-enacted several times a year by local enthusiasts. The three-wheeled mill dating from 1515 was named a cultural landmark in 2007. It's an easy walk from here to Jetřichovice and the Mariina outlook on the sandstone cliffs. The walk passes quaint cottages in the regional folk style. This magical spot is a popular shooting location for filmmakers and has been featured in numerous projects.

SOUVENIR DISKS ARE FOR SALE AT THE INFO CENTER IN JETŘICHOVICE OR AT THE VILLAGE HALL OR U KOSTELA RESTAURANT IN RŮŽOVÁ.



www.dolskymlyn.cz

Read the park rules



www.npcs.cz



THE MILL IN DAYS OF YORE

PRACTICALITIES

The easiest route to the mill is from Jetřichovice; it's a 3 km walk on the yellow hiking trail. The nearest bus stop is in Vysoká Lípa; walk on the blue trail to the Kamenice River and then follow the stream for 2 km. There's also a bus stop in Jetřichovice. If you're taking the train, you'll have a 10 km walk from Česká Kamenice on well-marked trails.

TIP!

DOLSKÝ MLÝN IS OPEN YEAR ROUND, RAIN OR SHINE.

Bohemian Switzerland, car free

The number of visitors to Bohemian Switzerland National Park grows every year. We're glad that there's so much interest in this beautiful part of the country, on the other hand, parking and traffic has become a real problem. So here are a few tips on how to head here for a daytrip and leave your car behind, at home or at the hotel. Bohemian Switzerland is well connected by a reliable network of tourist transport including bus and train lines.



DĚČÍN — HŘENSKO — JETŘICHOVICE
— CHŘIBSKÁ — KRÁSNÁ LÍPA

For example, to get to Pravčická Brána arch and the flat-bottomed boats in Hřensko, take bus 434; it runs across the national park from Děčín all the way to Krásná Lípa. Another option is the U28 train, the National Park railway, which runs from Děčín on one end and Rumburk on the other—get off at Schöna (Hřensko) and take the ferry across the river to Hřensko. From there you can walk, take bus 434, or hop on the Hřensko express—a miniature train that will take you a bit closer to Pravčická Brána—getting off at Tři Prameny or Mezní Louka.

Tourist destinations along the way:

- **Edmund and Wild river gorges**
(get off at Hřensko k soutěškám, or Hřensko Mezná)
- **Pravčická Brána arch**
(get off at Hřensko Pravčická Brána)
- **The adventure park and playground at Mezní Louka**
(get off at Hřensko Mezní Louka)
- **Mariina viewpoint, Vilemínina cliff**
(get off at Jetřichovice host.)
- **Kyjovský ruins, the fairy cave**
(get off at Krásná Lípa Kyjov host.)
- **Schauenstein bandit castle ruins, Lesser Pravčická Brána**
(get off at Jetřichovice Vysoká Lípa rest. or Hřensko Mezní Louka)



TIP!

TAKE A TRIP WITH
THE NATIONAL PARK
RAILWAY

www.drahanarodnihoparku.cz
www.nationalparkbahn.de



DOLNÍ ŽLEB — KLOPOTSKÝ WATERFALL — ČESKÁ BRÁNA — DOLNÍ ŽLEB

12 KM
LENGTH
5 HOURS
TIME
MEDIUM
DIFFICULT
DIFFICULTY

Start off from the stop in Dolní Žleb on the path through the woods following the current of the Elbe to the bluff in the Klopotský gorge, which forms the border with Germany. Follow the path up through the woods past Klopotský waterfall and the lake and continue on the German side to the crossroads marked Česká Brána. From here you can turn off towards Grosser Zschirnstein, the highest point in Saxon Switzerland, which has a great view (the detour is about 5 km total). Or return from Česká Brána on the green trail heading south. After about 2 km you'll get to U Buku crossroads, where you'll turn onto the yellow trail for a descent through a deep gulch known locally as "cognac" and back to Dolní Žleb.



300
m
Europe's deepest
sandstone canyon

DISCOUNT FARES WITH THE LABE/ELBE PASS

National Park Railway lines U27 and U28 and bus 434 are included in the Labe/Elbe discount pass (580 CZK for a group of 5). This also applies for DÚK regional bus passes (130 CZK), but only on the Czech side of the border. The all-day pass provides discounts for individuals and groups.

LABE/ELBE PASS		
1 PERSON 270 CZK (+ up to 2 children)	2 PEOPLE 380 CZK (+ up to 4 children)	5 PEOPLE 580 CZK (children regardless of age)

VALID UNTIL 4AM THE FOLLOWING DAY
The pass is valid on trains in the Ústí region, buses, the Hřensko-Schöna ferry, trains in Germany to Dresden and Meissen, trams in Dresden, and on buses and ferries in Saxon Switzerland and around Dresden. It's valid on municipal transit in Ústí, Děčín, Most, Teplice, Chomutov, etc., as well as tourist line 434 on the route Děčín – Hřensko – Jetřichovice – Krásná Lípa. Children = 0 to 14 years. Dogs and bicycles 90 CZK. Sold on trains and buses.

HŘENSKO / SCHÖNA — ZIRKELSTEIN — SCHÖNA — KAISERKRONE — SCHMILKA - HIRSCHMÜHLE

12 KM
LENGTH
5 HOURS
TIME
MEDIUM
DIFFICULT
DIFFICULTY

Start at Schöna rail station. Take the unmarked cobblestone road (and bike route) up into the woods. After a long ascent the road opens onto fields and meadows. In the distance to the left lies Saxony's smallest table mountain, Zirkelstein, ahead is the village of Schöna and above, to the right, the Kaiserkrone cliffs. Signs pointing to Zirkelstein lead from Schöna (yellow). A series of stairs and ladders lead to the top with its full-circle view. You can see the Schrammstein bluffs and the cliffs below Pravčická Brána. Upon returning to Schöna, follow the arrows to the next viewpoint, Kaiserkrone, which offers a number of viewpoints along the top of the ridge. The final descent takes you down along the red trail across the fields to the woods, where a stairway leads down to the banks of the River Elbe and the railway station Schmilka-Hirschmühle. There's also the option of catching a ferry across the river to Schmilka.

A tour of three unique viewpoints in Jetřichovice

One of the most beautiful routes for nature-lovers, hikers, and photographers.

The trip begins in the village of Jetřichovice, just 15 km outside of Děčín on bus 434 (get off at Jetřichovice hostinec). Set off from the tourist information center on the blue trail. A gentle climb takes you past a rock formation known as kočičí kostel ("kitten castle") over a meadow about 2 km to the Kny chapel. From the signpost here, you'll climb the stairs on the red trail. There are magnificent rock formations in this area.

TOUR ROUTE
DĚČÍN — JETŘICHOVICE — KNY CHAPEL — RUDOLFŮV
— KÁMEN — VILEMÍNINA STĚNA — MARIINA SKÁLA
— JETŘICHOVICE

LENGTH
8.5 KM

TERRAIN:
hilly, suitable for strong walkers

MARIINA SKÁLA ("MARIE'S CLIFF") WAS ORIGINALLY CALLED GROSSE SPITZIGEN. IT WAS RENAMED FOR MARIE ANNA, THE YOUNG WIFE OF LORD FERDINAND, WHEN THE VIEWPOINT WAS OPENED BY THE KINSKÝ FAMILY. THE LAST PHASE OF THE CLIMB IS PRETTY STEEP.

TIP!

FROM POHOVKA TAKE THE TRAIL TO ČESKÁ SILNICE ROAD. FROM HERE THE RED TRAIL LEADS TO THE BANDITS' CASTLE AT SCHAUNSTEIN AND LESSER PRAVČICKÁ BRÁNA.

439 M ABOVE SEA LEVEL



NOT SUITABLE FOR STROLLERS



www.obec-jetrichovice.cz



www.busline.cz
www.kr-ustecky.cz



NO BIKES ALLOWED



THE KNY CHAPEL WAS CARVED INTO A ROCK THAT LIES NEAR THE TRAIL

RŮŽOVSKÝ VRCH, AS SEEN FROM THE TRAIL

TEXT CARVED INTO THE TETREVNÁ OVERHANG BY FORESTER FERDINAND BUND IN 1856: "WHO IS MASTER? HE WHO INVENTS. WHO IS JOURNEYMAN? HE WHO DOES. WHO IS APPRENTICE? EVERYONE."

Continue along the Jetřichovice bluffs nature trail, passing below Koliště (zone one of the national park). There are lovely views the whole way. A short walk brings you to Pohovka crossroads, where you can take a break on a wooden bench. It's less than a kilometer to the signpost below the cliff-top viewpoint Rudolfův Kámen (also marked Ostroh). Getting to the top is challenging, but an adept child can manage it. From the top there's a full-circle view of the Czech Republic's newest national park.

Continue on the red trail to Purkartický Les crossroads. Soon after there's a turn-off for Vilemínina Stěna bluff and after about 200 m you'll find yourself enjoying the view. Nearby hilltop Růžovský Vrch is visible from here.

The trip continues on the red trail to a cliff overhang called Tetřevna, where you can take advantage of the shade for a snack break.

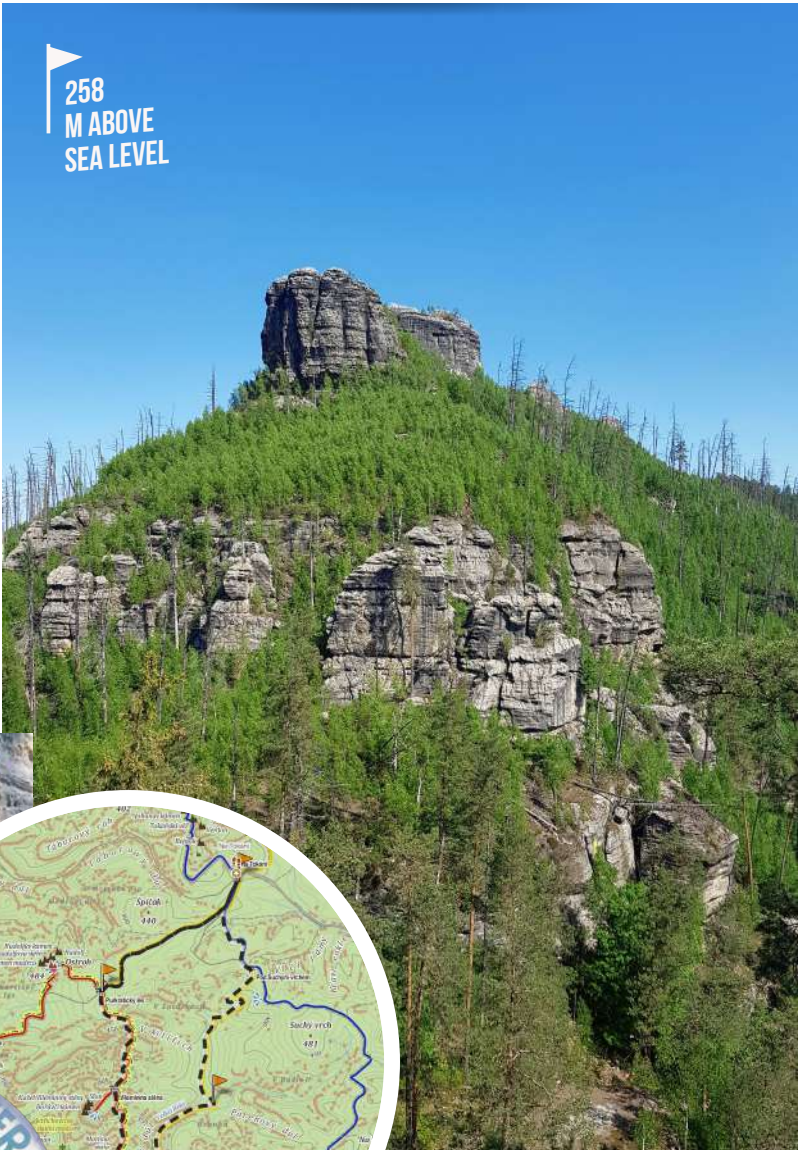
A cool forest path leads to the foot of Mariina Skála bluff. The woods in this area have been left to recover naturally from a weeklong fire that raged here on Havraní Vrch in 2006. The final ascent takes the narrow crevices between the cliffs on carved and wooden stairways with railings. At the top is a wood cabin. In good weather the climb is rewarded with sweeping views that reach well into Saxon Switzerland.

The route takes you back to the village of Jetřichovice where you can admire the folk architecture or check out the new local history exhibit next door to Praha restaurant.

Falkenstein ruin

This spooky spot is one of Jetřichovice's most interesting cliff-top castles. If you want a bit of a scare, come for a tour and some hair-raising tales of its past.

This cliff-top stronghold from the turn of the 13th and 14th centuries lies 2 km from Jetřichovice. You can explore the ruin on metal stairways and catwalks and reconstruct an image of the rooms, kitchen, and well that served its inhabitants. Many suffered cruelly here. The castle was once inhabited by a band of highwaymen, who terrorized the surrounding neighborhood. They were punished for their evil deeds, but people say that their spirits still haunt the spot.



THE RUIN IS NOT ACCESSIBLE FOR PRAMS

50°51'17,3° | 14°24'20°

TIP!

FROM JETŘICHOVICE THE YELLOW TRAIL LEADS TO FALKENSTEIN AND THEN ON TO TOKÁŇ. TURN ON TO THE BLUE TRAIL JUST BEFORE TOKÁŇ. THERE ARE PLENTY OF RESTAURANTS IN TOKÁŇ, A SETTLEMENT OF WOOD COTTAGES BUILT BY THE KINSKÝ FAMILY.

Enjoy the beautiful Bohemian Switzerland countryside on the way. From the center of Jetřichovice, take the yellow trail (also bike trail 3076). After about 400 m, turn left off of the bike trail and take the metal staircase up to the ruin at the top.

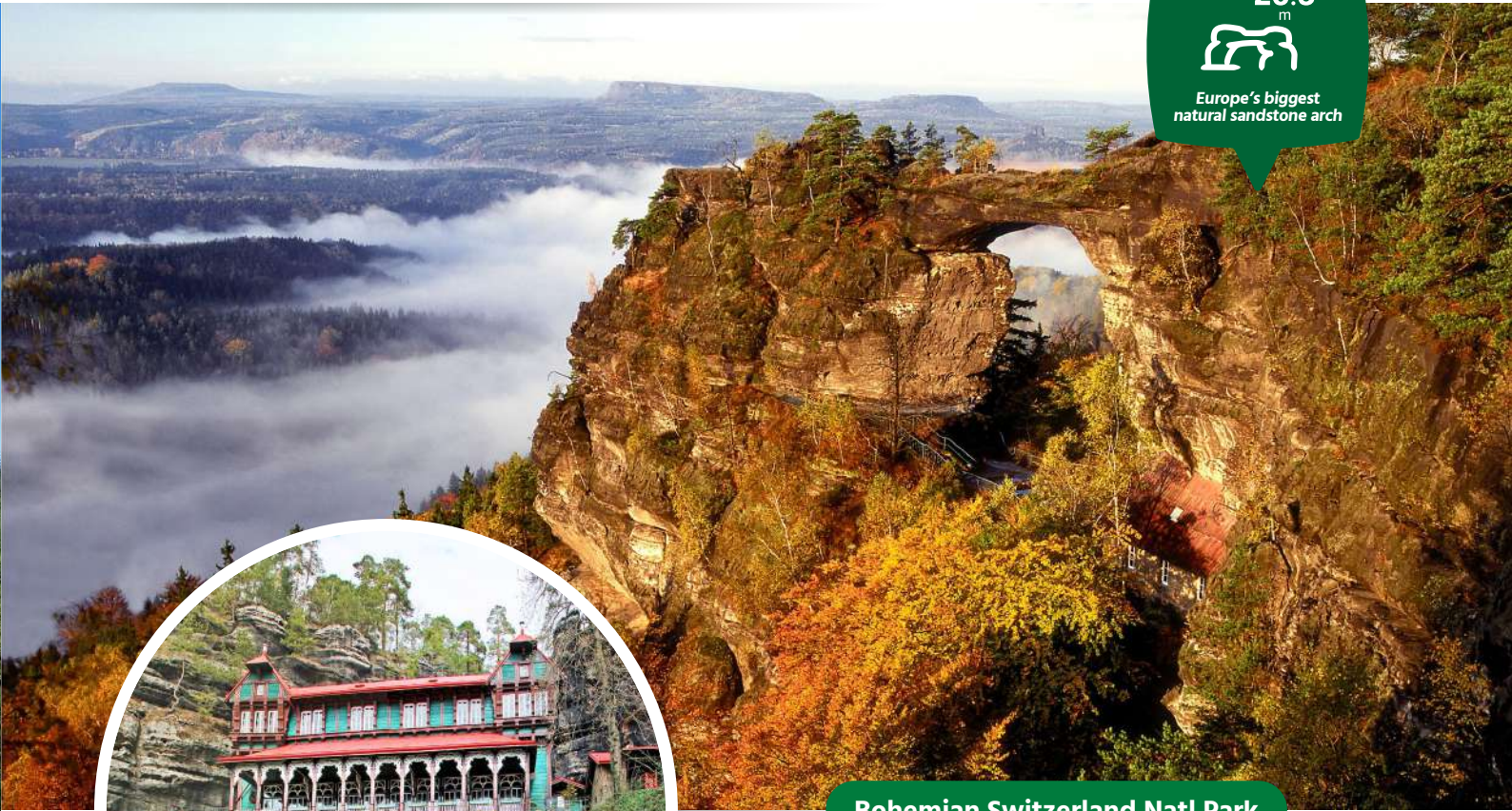
After coming back down, you can return on the yellow trail, but if you walk the opposite way you'll rejoin the bike path a little further on.

More seasoned hikers should have a go at the red trail leading to the viewpoints Mariina Vyhlídka, Vilemínina Skála, and Rudolfův kámen (at the end take the green trail from Pohovka). If you have small children along, it's worth taking a look at the dwarfs carved into the nearby Rynartice cliffs.

26.5 m



Europe's biggest natural sandstone arch

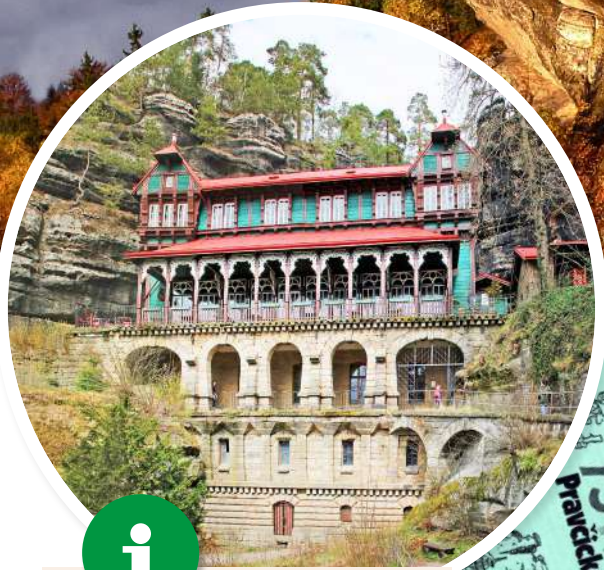


Bohemian Switzerland Natl Park

Pravčická brána

Don't miss Europe's biggest natural sandstone arch.

One of Bohemian Switzerland's most stunning natural formations is undeniably Pravčická Brána. This natural sandstone arch, a symbol of the region, is a truly impressive natural formation that no visitor to Děčín should miss seeing. Its great size is even more astounding up close. The arch spans 26.5 meters at a height of 16 meters and is 7 to 8 meters wide. At its narrowest, the bridge is only 3 meters across. The upper surface is 21 meters up.



www.pbrana.cz/en

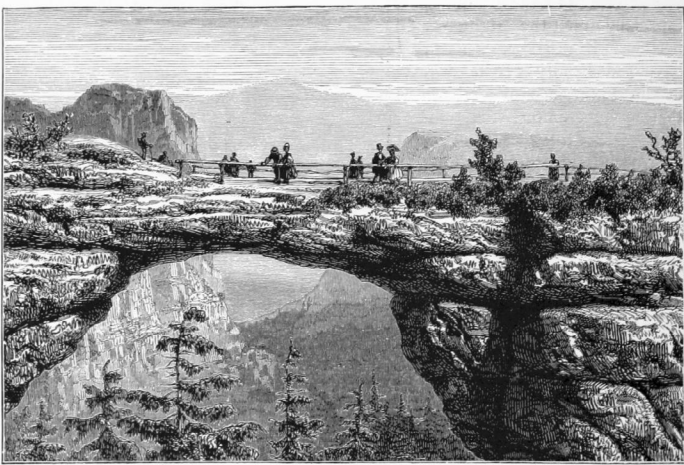
APRIL – OCTOBER
DAILY 10AM – 6PM

SEE THE WEB FOR WINTER HOURS.

Information
+420 604 238 209



THE TOP OF THE ARCH USED TO BE OPEN TO VISITORS



SAXON SWITZERLAND : THE PREBISCHTHOR, A COLOSSAL NATURAL ARCH.

There are several paths leading to this wonder. A long, easy walk heads from the parking lot in Mezní Louka, following the sandstone cliffs for 6 km. A shorter, more demanding route starts at the paid parking lot in Hřensko, the lowest-lying town in Bohemia, and climbs straight up to the arch.



A 19TH CENTURY VIEW OF THE GORGE



STROLLERS
RIDE FREE



NO BIKES ON
BOARD



www.
en.hrensko.net

HOURS

DAILY 9AM – 6PM

CHECK THE SIGNPOSTS AT THE
ENTRY TO THE GORGE FOR CURRENT
INFORMATION ABOUT BOAT HOURS!

Information center
+420 412 528 344

THE WILD GORGE

Though the boat ride here is shorter (and the fare lower) the natural scenery of the hiking trails here is remarkable. It continues from Edmund Gorge, allowing visitors to pass through the entire Kamenice River valley. The Wild Gorge is popular with repeat visitors.

WC

CLEAN TOILETS AND
REFRESHMENTS ARE
AVAILABLE IN THE LOG
CABIN AT EDMUND GORGE



Bohemian Switzerland Natl Park

Edmund Gorge and the Wild Gorge

The river gorges near Hřensko have been a favorite with visitors from around the world for over 125 years.

A boat ride through the gorge is an experience that stays with you. For anyone who rode the barks in their childhood, memories will come flooding back when they return. The trick waterfall, in particular, seems to have a way of unlocking those lost memories. Each season in the gorge has its own charm. There's always something new to discover here. Beyond the boat ride, the hiking trails have plenty to offer and it pays to keep one's eyes open. A walk through the gorge is a great way to relax and escape from the daily grind.

We maintain a friendly, professional atmosphere for all visitors, and their pets too. Our trained, experienced staff will take care of you throughout your trip while sharing entertaining anecdotes from the history of the gorge.

VISITORS CAN PICK UP A MAP AT
PARKING LOTS AND INFORMATION
CENTERS IN THE VILLAGE TO HELP
THEM FIND THEIR WAY.

TIP!

Daytrips & Adventures

Unique local project celebrates 20 years!

It has been 20 years since exploratory drilling began for the geothermal heating project in Děčín. The one-of-a-kind project, unique in the Czech Republic, replaced an original plan from the 1980s to build a coal-powered heat plant in the Benešovská industrial park.

The project was drafted by Energoprojekt Praha with the help of Danish consulting company Bruun & Sorensen. Geothermal heat is produced using water at 30°C originating from a depth of more than 500 m below the earth's surface. The water runs through a series of heat pumps and cogeneration units where it is brought to the desired temperature for household heating in Děčín.

The new project utilizes parts of the original water processing and distribution building, the concrete smokestack, which had to be fitted with two separate ceramic vents for the furnace and cogeneration units, and part of the original foundation.

The project, which established a central cogeneration source and a hot water network with client hookups, has successfully replaced seven oil-powered furnaces on Děčín's right bank that had been major polluters.



TIP!

YOU CAN BOOK TOURS
THROUGH THE CITY'S
VISITOR INFORMATION
CENTERS IN THE PUBLIC
LIBRARY AND THE MAIN
TRAIN STATION.

TOURS

Termo Děčín a.s. partners with the city to offer tours of this unique facility FOR FREE.

TOUR TIMES

MON from 10AM
FRI from 2PM

TOUR GROUPS ARE LIMITED
TO 5 TO 20
PARTICIPANTS.

THREE HEAT SOURCES AT THE
PLANT: HEAT PUMPS (2 X 3.28
MWT), GAS COGENERATOR
MOTORS (0.8 MWE/1.01 MWT;
1.94 MWE/2.09 MWT), AND GAS
FURNACE (2 X 16.5 MWT).

VODA 0,9 MPa 65 °C

Construction was begun in October 2000 and the first delivery of heat was made from the cogeneration units in June 2002 and from the heat pumps in August 2002. The complex was handed over the following September and winter testing was begun on 11 December 2002. Investment in the project has been estimated at more than 550 million crowns.

While heat pumps and gas motors are in operation year round, the gas furnace serves to cover demand in the winter and act as a backup. A tank measuring 800 cubic meters helps stabilize daily fluctuations on the network outside of the main heating season.

The heat network 110/65 OC, more than 10 km in length, utilizes insulated piping and 122 new domestic distribution stations to ensure quality heat delivery for customers and makes individual regulation of heat possible.

One of the major benefits of the project has been the significant reduction of air pollution in Děčín, the Elbe Sandstones Nature Preserve, and nearby Bohemian Switzerland National Park. It also serves to buffer the cost of heating against fluctuations in natural gas prices, which have risen in recent months.

Welcome aboard!

Riverboat cruises offer a unique perspective of the Elbe Sandstones, historical landmarks, and sites on both the Czech and German sides of the border.

We operate three craft out of Děčín—the Bohemia, the Orion, and the Poseidon—for a great travel experience with refreshments and rolling commentary. In addition to scheduled cruises, our ships are available for chartered trips—unforgettable company parties, family celebrations, and romantic weddings.

TIP! SHIPS OPERATE YEAR-ROUND, WITH SCHEDULED RUNS FROM APRIL TO OCTOBER AND ON ADVENT WEEKENDS.



TO MEISSEN AND MORITZBURG

Our longest cruise takes you to the city of Meissen, passing through the Elbe canyon, the heart of Dresden, and Saxon vineyards along the way. After docking, you'll walk through the medieval town center, where you can visit the area's world-famous porcelain makers. Finish up the day at Moritzburg castle, setting for the film *Three Nuts for Cinderella*.



www.labskaplavebni.cz



CRUISE WITH US
EVERY DAY

Labská plavební s. r. o.
Karla Čapka 1 / 405 02 Děčín

TO HŘENSKO AND BAD SCHANDAU

Let your fantasy take over and cast off to discover Hřensko and the spa town Bad Schandau. The boat docks for long enough to allow a hike up to Pravčická Brána in Hřensko and to see the sites in Bad Schandau. An easy cruise, suitable for small children.

TO KÖNIGSTEIN

This popular destination welcomes 800,000 visitors per year. Our package combines a romantic cruise through the Elbe canyon with a visit to this unique tourist destination.

TO DRESDEN

Among the passengers aboard the historic maiden voyage to Dresden in 1841 was storyteller Hans Christian Andersen. He was enchanted by the experience. The cruise rewards you with dramatic natural scenery, pretty vineyards, and historical gems such as Königstein, Pirna, Rathen, and Wehlen, with live music, refreshments and commentary along the way and on the foot tour of Dresden. Perfect for romantics and amateur photographers.

TO PILLNITZ

Cruise to Pillnitz castle, one of the most popular sites on the Elbe. The stunning copy of the Imperial Palace and gardens in Beijing with a 230-year-old camellia will turn your head. We dock at the castle garden. Easy, level paths.

TO KURORT RATHEN

Cars are not allowed into Kurort Rathen—only trains, boats, and day-trippers. A cruise to this Saxon spa town to see the Bastei fortress, the miniature railway, a promenade to the spa viewpoint, boat rentals on the Amselsee, and the outdoor theater pavilion is sure to please both big and small.

Three days of adventures

WITH AKTIV POINT.

The jagged landscape of mountains and cliffs that dominates Děčín's deep Elbe River canyon seems made for adventure. It's worth a visit. Come join us for irresistible experiences. We'll help you map an active three-day trip where you'll get on the river, cover some ground on a scooter, and climb the *via ferrata*.

BY RAFT, CANOE, OR PADDLEBOARD ON THE ELBE, AND BACK BY BIKE OR SCOOTER

Plying the river from Děčín downstream to Bad Schandau in Saxony is a unique water adventure. The great river carries your boat through the breathtaking valley giving you time to admire the sheer cliffs towering on either side. You might spy a heron or black stork flying overhead, and dodge the occasional ferryboat. Your choice of watercraft includes inflatable rafts and plastic canoes. The trip to Bad Schandau takes about 4.5 hours, while Schmilka takes just three and for Dolní Žleb you only need two hours. You can try paddleboarding on the waters in Děčín. You'll never see the river in the same light again. Camp Děčín, located on a spot between the river and the bike trail, is your watersports base.

BIKES, ELECTROBIKES, AND SCOOTER DESCENTS FROM DĚČÍNSKÝ SNĚŽNÍK

The bike trail goes along the Elbe River valley, so it's easy to combine a water adventure with a bike trip or a ride on a push scooter. It's a popular combination. Once you make shore, just swap your paddle for a bike or scooter and return along the Elbe bike trail. It's a great trip for the whole family. But the Elbe bike trail isn't your only option for a ride. There are the Ploučnice and Krušnohorská trails as well. The latter gets you from Děčín all the way to the Tisá rock formations, which are well worth a visit. Be prepared for some uphill riding, but if you rent an electro bike, you'll get there with ease. And while you've got that electro bike, you should definitely head for Děčínský Sněžník; it's got a great view of Bohemian Switzerland and the central uplands. But if you're looking for a really unique experience, you've got to ride down to Děčín from atop Bohemia's highest table mountain on a scooter. We'll take you from the pickup in Děčín to a spot just below the summit and after you've conquered the hill, you'll ride the 12 km back. For hardcore adventurers there's a 45 km route. We provide maps on every trip or you can buy a guidebook that will show you the beauties of the area.

ADVERTISEMENT

AKTIVITÄTEN & VERLEIH



WWW.ACTIVE-POINT.CZ



active point Děčín

VIA FERRATA: ALONE OR WITH A GUIDE

Only in Děčín can you experience the thrill of conquering the biggest *via ferrata* park in Bohemia. With a variety of routes to choose from, there's something for experienced climbers, beginners, and families. You won't have to worry about equipment. We'll rent you everything you need right at the foot of the cliff. We'll show you what to do and help you choose the right route. And if you need a helping hand, our friendly, experienced guides are there for you. A climb on the cliff with its unbeatable view of Děčín Castle and the Elbe River canyon is something you simply must do.



ACTIVE POINT

Labské nábřeží 33
405 02 Děčín

+420 739 561 932

+420 724 006 865

info@active-point.cz



www.
active-point.cz

Bohemian Switzerland's largest sports equipment rental service, **ACTIVE-POINT.CZ** handles all of your adventures and equipment rentals, seven days a week. You'll find us on the Elbe riverbank right next to the *via ferrata* park. We rent first-class, certified equipment from Czech manufacturers to individuals and large groups. Lodging is available at Camp Děčín in modern bungalows with en suite bathrooms.

COMBINED CITY AND CASTLE TOUR FOR THOSE WITH A SWEET TOOTH

And we've got a final tip for your stay in Děčín. Wrap up three days of adventure with a guided walk of the historical castle grounds and a tasting of local goodies.



kemp děčín

WWW.KEMPDECIN.CZ
+420 774 262 111

Comfy B&B in bungalows



ADVERTISEMENT



EQUIPMENT RENTAL
IS AVAILABLE AT
THE FOOT OF THE
CLIFF.

16 ANCHORED
TRAILS

VIA FERRATA
DĚČÍN

150
m
The biggest
via ferrata in CZ

Daytrips & Adventures

A via ferrata in the heart of town

There aren't many cities with as many anchored climbing trails as **Děčín**, where you can experience the thrill of scaling a sheer cliff face right in the heart of town on the Elbe River bank.

Sixteen *via ferrata* routes compete for your attention, offering gorgeous views for climbers from all over the world. Flip through the visitor's log at the top to see who was there before you. With 150 meters of anchored trails of various skill levels, there's something for anyone who's not too afraid of heights. The climb takes about one hour from the riverside to the top of the sandstone bluff and is something even a ten-year-old can master.

An intense experience and stunning views of the castle and river are no longer a privilege reserved for experienced climbers. Qualified guides help individuals and groups on the ascent.

WHICH
WAY DOWN?

 [www.
idecin.cz/en](http://www.idecin.cz/en)

TIP!

Would you like to try your hand at the *via ferrata*, rock climbing, or rappelling, but don't know where to begin? We'll be glad to help. Our certified rock climbing instructors will guide you on the *via ferrata* parks in DĚČÍN and neighboring Saxony and teach you to scale sandstone cliffs. We offer equipment rental. And we enjoy working with kids. Try these great sports while you're in Bohemian Switzerland. It could become a lifelong passion.

 [www.
naferratu.cz](http://www.naferratu.cz)

Getting on the Ferrata
Labské nábřeží 1717/31
+ 420 724 220 529

Daytrips & Adventures

Paddleboarding on the Elbe

Discover a sport that gets you in shape, and see the gorgeous Elbe River canyon from a completely different angle. Try paddleboarding ;)

Trips start on the Elbe River bank under Tyrš Bridge and finish in Dolní Žleb at the restaurant by the ferry crossing. This basic route offers a variety of options for the return trip to DĚČÍN. You can take the train back from the nearby station, or drivers can return with me by car for their own vehicle, or I can bring bikes, scooters, or inlines along and you can return along the bike trail to DĚČÍN under your own steam. Another option is to borrow a bike at Cyklopůjčovna, near the paddleboard rentals, and ride it back along the bike trail.

Labské nábřeží 309/35 | DĚČÍN
lodedecin@gmail.com | +420 776 866 644



www.paddleboarddecin.business.site



DĚČÍN HAS COME INTO ITS OWN AS A POPULAR TOURIST DESTINATION. YOU CAN RENT A PADDLEBOARD JUST STEPS AWAY FROM THE VIA FERRATA. TRY IT NOW, BEFORE ALL THE BOARDS ARE TAKEN!

HOW MUCH WILL IT COST?

500 CZK/day

Just 500 CZK rents you a paddleboard, with a paddle of course + a life jacket + a leash (so that you won't lose your board) + a waterproof bag + instruction + equipment pickup when you make land.

You'll need a valid picture ID and a security deposit of 1,000 CZK.

**TOP
TIP**

FROM
RECREATIONAL
RUNNER MICHAEL
BURDA OF THE
HUDYSPOUT SHOP IN
HŘENSKO.

**31.5 KM
DISTANCE
1052 M
CLIMB
1053 M
DESCENT**

Running through "Bohemian Gate"

Starting at the left bank parking lot by Tyrš Bridge, run through the tunnel under the railway track and turn right. Cross the tracks again at the railroad crossing, turn left and follow the yellow trail all the way through Maxičky to U Buku crossroads. Continue across the plateau on the green trail to the Czech-German border and Česká brána. Here you head right, crossing the first path and join the yellow trail, which you follow to the right. It takes you to a major crossroad where you choose the way to the right and run on towards the village of Schöna. Follow the yellow trail around Zirkelstein, where there are excellent views of the Saxon table mountains and into the village. Once in the village, take a right at the Old Timer museum and run down to the River Elbe. The trail continues along the river, where you can enjoy a view of Europe's deepest sandstone canyon. Continue until the ferry crossing in Dolní Žleb, a rock-climbing hot spot. Run under the railway overpass to the right and then take a left and go on until you join the yellow trail, which takes you towards DĚČÍN. On the way there's a great view of the rock climbers on the opposite shore. In Čertová Voda take the green trail, which will take you back to the bridge where you started.

Food & Lodging

Hostel – Comfortable lodging in the heart of town

For simple, pleasant rooms in Děčín at low prices, this is the place.

HOSTEL
Děčín

WI-FI
BIKE STORAGE
LAUNDRY
GYM
SAUNA

Hostel Děčín
Čsl. Mládeže 21
info@hostel-decin.cz
Reservationst
+420 777 286 963
+420 775 286 963

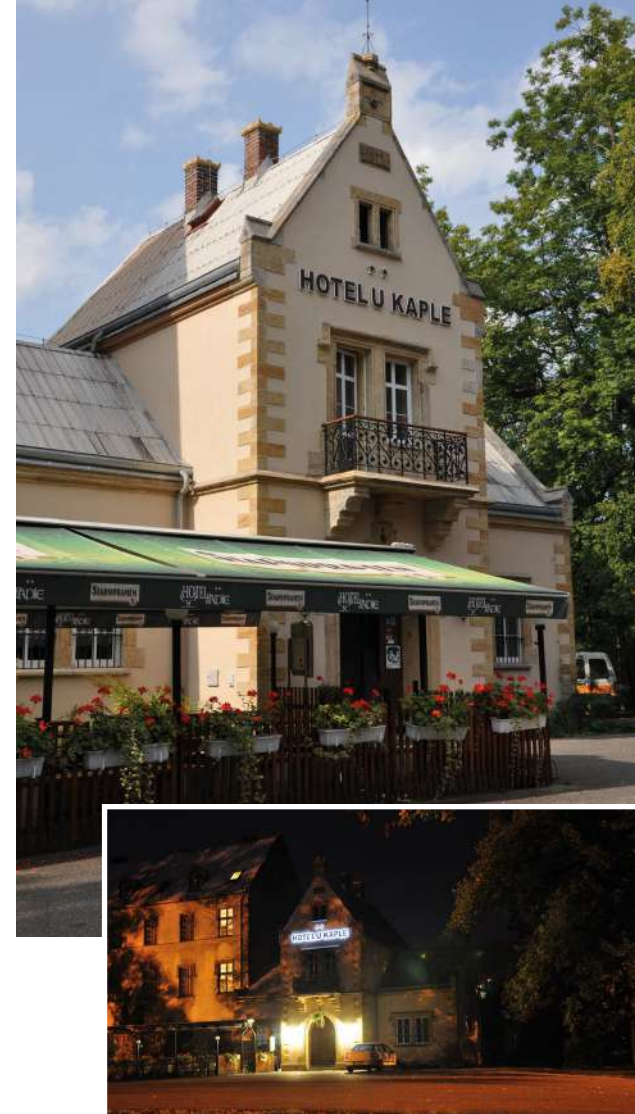
Centrally located near the train station and bus stops, Hostel is an ideal base for daytrips to Bohemian and Saxon Switzerland. We offer cheap accommodations with shared bathrooms and kitchen facilities for hikers and backpackers as well as en suite rooms and suites with kitchenettes.

We now provide seven-passenger shuttle service to destinations in the Bohemian and Saxon Switzerland national parklands, and custom, guided tours.

Our friendly staff is always ready to help you plan your trip.



www.
hostel-decin.cz



Hotel **/*** U KAPLE

Vážení přátelé!
Dovolujeme si Vás pozvat do dvouhvězdičkového hotelu v Děčíně.

Hotel U Kaple **/*** se nachází v klidném prostředí bývalého objektu kláštera, naproti jedné z významných architektonických památek Děčína - Thunské kapli. Hotel s kapacitou 46 lůžek Vám nabízí pohodlné a příjemné ubytování v 10 dvoulůžkových, 6 třílůžkových a 2 čtyřlůžkových pokojích. Na všech pokojích se nachází sociální zařízení se sprchovými kouty. Součástí areálu je i skvělá restaurace s barem o celkové kapacitě 80 míst a letní terasou se 48 místy.

www.hotelukaple.cz



 **PENZION**
AROSA



ENJOY YOUR TRIP!

Great location • Exceptional comfort • Excellent prices



Penzion AROSA • Růžová 298 • 602 193 293
www.arosa.cz

ORIGINÁLNÍ RUČNĚ VYRÁBĚNÉ ČOKOLÁDOVÉ BONBONY
aneb **BEZ ČOKOLÁDY NEODJÍŽDĚJTE!**

Jordan
Výběrová čokoláda z Děčína



Děčínskou čokoládu si rozhodně nenechte ujít. Její lahodnou chuť a nepřeberné množství náplní můžete ochutnat v kavárně v centru Podmokel. Ta totiž nabízí skvělé bonbony z malé rodinné manufaktury.

HUSOVO NÁMĚSTÍ 117, DĚČÍN IV

DĚČÍN ROWANBERRY BRANDY

The hills around Děčín offer suitable conditions for rowan trees, used in folk medicine for a long time. The distinctive piquant flavour of our rowanberry brandy without added sugar will surely enchant you. 46 % alc. by vol.

DĚČÍN CASTLE LIQUEUR

The liqueur follows in the tradition of growing exotic plants in Děčín Castle gardens. The refreshing taste of citrus fruits is accompanied by aromatic herbs and spices. 38 % alc. by vol.


GRĚŠÍK
VALDEMAR

Valdemar Grešík - Natura s.r.o.
Březinova ul., Děčín I, tel.: +420 412 516 268
Zbrojnická ul., Děčín IV, tel.: +420 412 513 557



www.gresik.cz

The fantastic cliffs of Tiské Stěny

Step into Narnia... no magic wardrobe required.

Standing among the cliffs at Tiské Stěny is like being in a fairy tale. This fantastic landscape, often sought out by filmmakers, lies at the edge of the Elbe Sandstones in the village of Tisá. This magical concentration of rock formations surprises visitors with weird shapes resembling animals, figures, and faces. Marked trails covered with fine, white sand, offer seven informational stops.

THE MUSHROOM



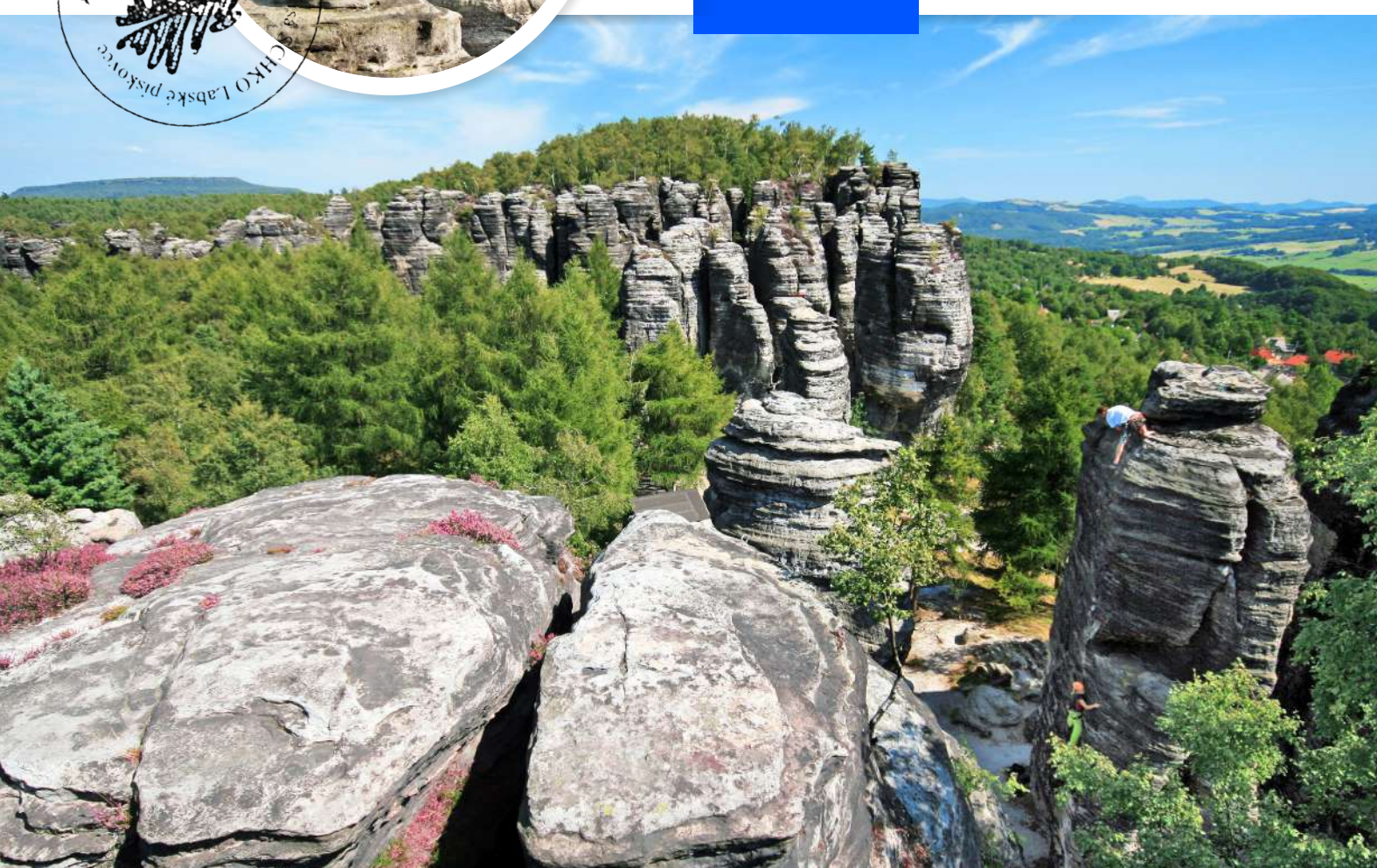
TIP!



www.tisa.cz/en



The entrance to the cliffs is in the village of Tisá, where there is parking near St. Ann's Church. You can end your visit with a bite to eat at one of the area's charming restaurants. This is a great outing for families with children practically year-round.



Děčínský Sněžník

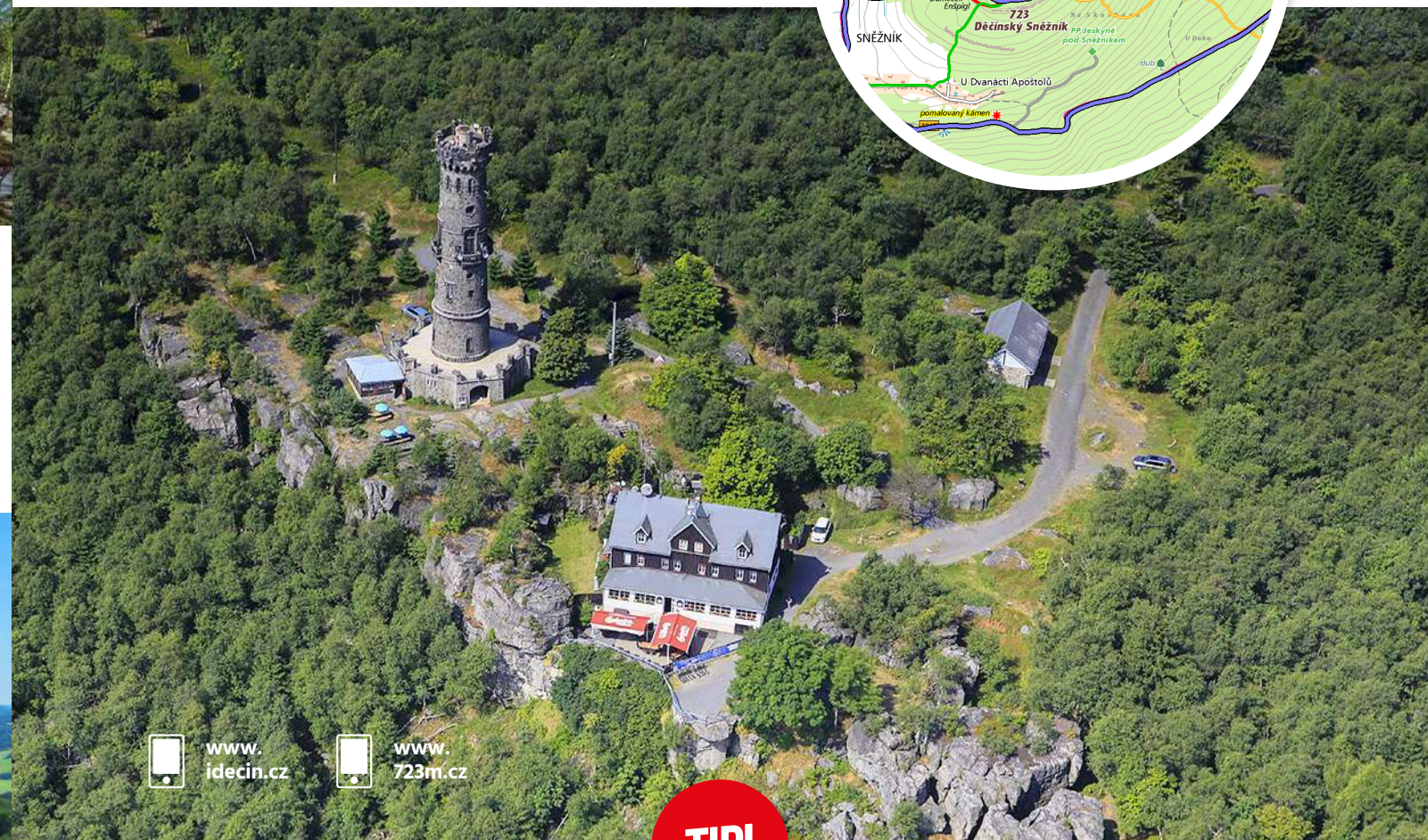
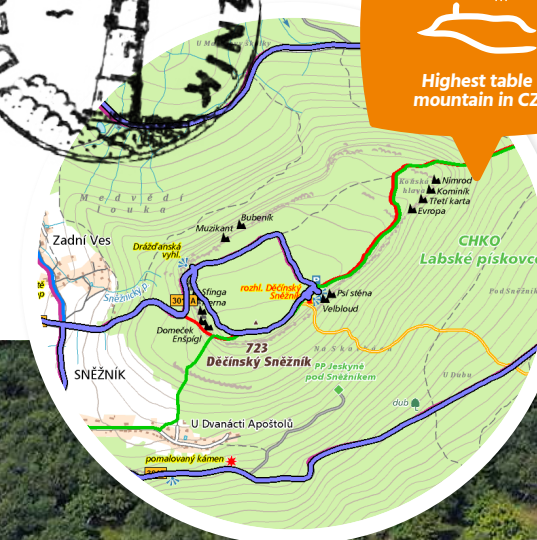
Take a look around from the highest table mountain in the Czech Republic.

No visit to Děčín would be complete without a visit to one of the oldest watchtowers in Bohemia. Děčínský Sněžník, at 723 meters above sea level will stun you with its wonderful view of the Lusatian Mountains and Bohemian and Saxon Switzerland.



723 m

Highest table mountain in CZ



www.idecin.cz



www.723m.cz

TIP!



50.792951N, 14.108563E

Getting to Sněžník

There are lots of ways of getting to this regional landmark. The simplest is by car. Drive to the paid parking lot and then you'll have a 1.5 km walk up a paved path to the top. You can opt for an alternate route along the red trail that follows the edge of the ridge. A restaurant and buffet serve refreshments at the watchtower. Ride your bike up from town on bike route 23. Or save yourself a little effort and take advantage of the bus-and-bike service. Once you're at the top, there are plenty of bike paths to choose from.

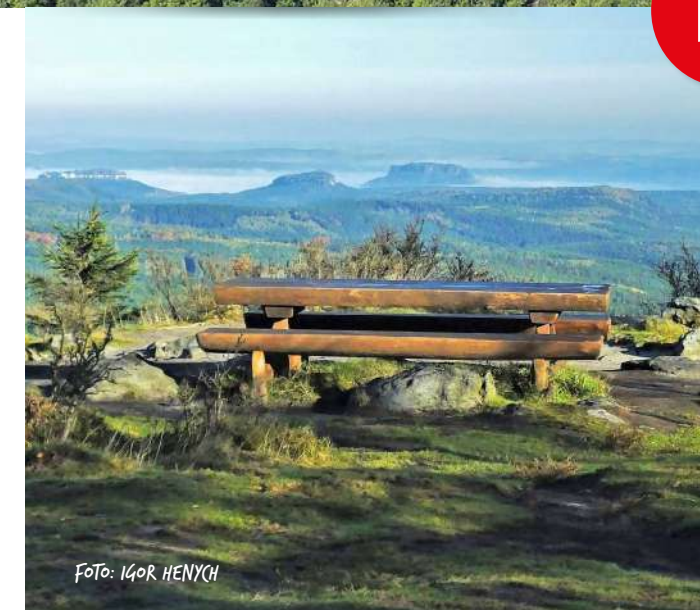


Foto: I40R HENYCH

Děčín area watchtowers



50.780506N, 14.271188E

SOKOLÍ VRCH IN DOBRNÁ

This telecommu-
nications tower
in the village of
Dobrná, between
Huntřov and Folknáře, was built in 2004 and has a
viewing platform that is open to the public. At a height
of 34 m, it is the second tallest observation tower in
northern Bohemia. The climb of 162 steps to the top is
rewarded with a sweeping view of the Děčín and Ústí
area. You can drive up to the tower or take bus 212 and
get off at the final stop (Děčín-Folknáře) from which it's
a 2 km walk through the woods.

162
STEPS

TIP!

TAKE A STROLL TO
BRLOŽEC, ABOUT
2 KM EAST OF
DOBRNÁ, TO SEE
THE OLD WINDMILL.

JULY – AUGUST

HOURS

DAILY 10AM – 8PM

Adults	30 CZK
Youth, seniors, students	20 CZK
Children 6 and under	FREE



OTHER MONTHS

May, June, September, October 10am
– 5pm daily except Mondays; April and
November weekends and holidays or by
prior arrangement (tel. +420 775 683 714).
The tower is open on New Year's Day
10am – 4pm.



JANOV OBSERVATION TOWER

At Janov, just 15 km from Děčín, there's
a 40-meter telecommunications tower with an observation platform. Hikers
can follow the yellow hiking trail from
Hřensko, but it's also accessible by bus
or car. The tower offers a nice view of
Děčínský Sněžník, the Stříbrné Stěny
cliffs, Pravčická Brána arch, Růžovský
Vrch, the Lusatian Mountains, and
parts of Saxony. The observation
tower is operated by Nord Bohemia
Golf, which owns the neighboring golf
course.

HOURS

**OPEN DAILY
FREE admission**



50.860841N, 14.269786E



www.
branadocech.cz



TIP!

IT'S AN EASY WALK ALONG
THE PAVED ROAD TO NEARBY
HŘENSKO, PRAVČICKÁ BRÁNA,
AND THE EDMUND AND WILD
GORGES. THIS ROUTE, TAKEN IN
THE OPPOSITE DIRECTION, FROM
HŘENSKO TO JANOV, IS KNOWN
AMONG AMATEUR CYCLISTS AS
THE SITE OF JANOVSKÝ TRHÁK, A
TOUGH LITTLE UPHILL BIKE RACE
HELD IN APRIL OR MAY.



82 STEPS

VLČÍ HORA

TIP!
WHILE ON VLČÍ HORA, STOP BY NOBILIS TILIA TO BROWSE THEIR NATURAL AROMA THERAPY COSMETICS.

VLČÍ HORA

www.rumburk.cz

Six kilometers outside of Rumburk, at an elevation of 581 meters, lies Vlčí Hora with its four-sided watchtower (82 steps). The wooded hill on which the tower stands is formed of basalt with some magnetite, which can divert a compass needle by as much as 40 degrees. The tower affords an almost 360-degree view of Bohemian and Saxon Switzerland, the Lusatian and Ore Mountains, and the Elbe Sandstones. It was built in 1889 by the Mountain Club for Northernmost Bohemia, designed by Josef Hampel. It is the oldest observation tower in the Šluknov spur. A roof was built over the viewing terrace in 1909, increasing the tower's height to 16 meters. Follow the yellow trail from Rumburk to Vlčí Hora.

50.939668N, 14.465347E

MAY – SEPT

HOURS
DAILY 9AM – 5PM

Adults	15 CZK
Youth, seniors, students	8 CZK
Children 6 and under	FREE

OTHER MONTHS

October – April weekends and holidays
10am – 3pm (closed Dec. 24 and 31)



RŮŽENKA VIEWPOINT

50.844082N, 14.301132E

THE COMMUNITY RAISED FUNDS FOR THIS UNUSUAL OBSERVATION TOWER. IT OPENED IN APRIL 2018.

Originally drafted to stand 12 meters high, the tower was shortened after consultation with preservationists. At 6.2 meters tall, it offers a view of Bohemian and Saxon Switzerland. You can see Lilienstein, Grosser Winterberg, Papstein, Pravčická Brána, Milešovka in the central uplands, Sokolí Vrch, Sněžník and Jedlová. The viewpoint's odd design recalls modern architect Jan Kaplický's winning plan for the national library in Prague, sometimes dubbed "the octopus." Yet the tower was drafted before those sketches were made public. If you want to explore other panoramas, head for nearby Janov. The towers in Růžová and Janov are only 4 km apart. There's a good view from Děčínský Sněžník, Stříbrné Stěny cliffs, Pravčická Brána arch, Růžovský Vrch mountain, and at points throughout the Lusatian Mountains and Saxony's table mountains. Also nearby is a golf course.

TIP!
DAYTRIPS IN THE AREA INCLUDE RŮŽOVSKÝ VRCH, KNOWN AS DĚČÍN'S MOUNT FUJI, THE RUBENS SOAP WORKSHOP, DOLSKÝ MLÝN MILL, AND MORE.

RŮŽOVSKÝ VRCH

www.obec-ruzova.cz

OBSERVATION TOWER VELKÝ CHLUM

THE VIEW FROM VELKÝ CHLUM TAKES
IN BOHEMIAN SWITZERLAND, THE
ORE MOUNTAINS AND THE CENTRAL
BOHEMIAN UPLANDS.



50.747722N, 14.228292E

83
STEPS

Děčín, a city set in the Elbe river valley, among volcanic hills and sandstone bluffs, occasionally makes its own run for the hills. When it does, fantastic panoramas open up. There are a number of viewpoints to choose from. If you prefer classic stone towers, then Velký Chlum is just the thing. The red trail will take you there from the middle of town. The view takes in the Central Bohemian Uplands, Ore Mountains, and Elbe Sandstones. The original hillside settlement here had a number of pubs and restaurants, all long gone. There remain a scattering of houses, a chapel, and this 16-meter stone tower. Climb its 83 steps year-round. There are two open-air viewing platforms where you can see Kletečna, Milešovka, Děčínský Sněžník, and part of Bohemian Switzerland. Relax around a campfire in the fire ring at the foot of the tower. In the summer it's a great spot for watching the sun set over the city and the hills.

TIP!

FROM DĚČÍN HEAD TOWARDS
BENEŠOV NAD PLOUČNICÍ TO
HORNÍ CHLUM, WHICH LIES
IN THE PASS BETWEEN MALÝ
CHLUM AND VELKÝ CHLUM.
IT'S ONE KM ON THE RED
TRAIL TO THE TOP.



Healthy café

In the heart of Varnsdorf next
door to Emavík health food store.

Zdravá Kavárna Emavík
Poštovní 1140 / 407 47 Varnsdorf
+420 736 269 194 / info@emavik.cz
f @zdravakavarnadecin

HOURS

MON	9AM – 6PM
TUES	9AM – 6PM
WED	9AM – 6PM
THURS	9AM – 6PM
FRI	9AM – 6PM
SAT	9AM – 6PM
SUN	CLOSED



Indulge your sweet tooth with a raw dessert made of the best organic ingredients. We also serve gluten-free cakes from Děčín bakers. Satisfy your hunger with a toasted sandwich, tossed salad with salmon, raw soup, and other treats.

**Come wind
down after a day
out. We look
forward to your
visit. Emavík,
the healthy café**

We prepare refreshing, organic smoothies and fantastic, homemade lemonade. Relax over a cup of organic coffee or loose-leaf tea.

You won't find refined sugar here, and we offer lactose-free milk and whipped cream as well as non-dairy options.

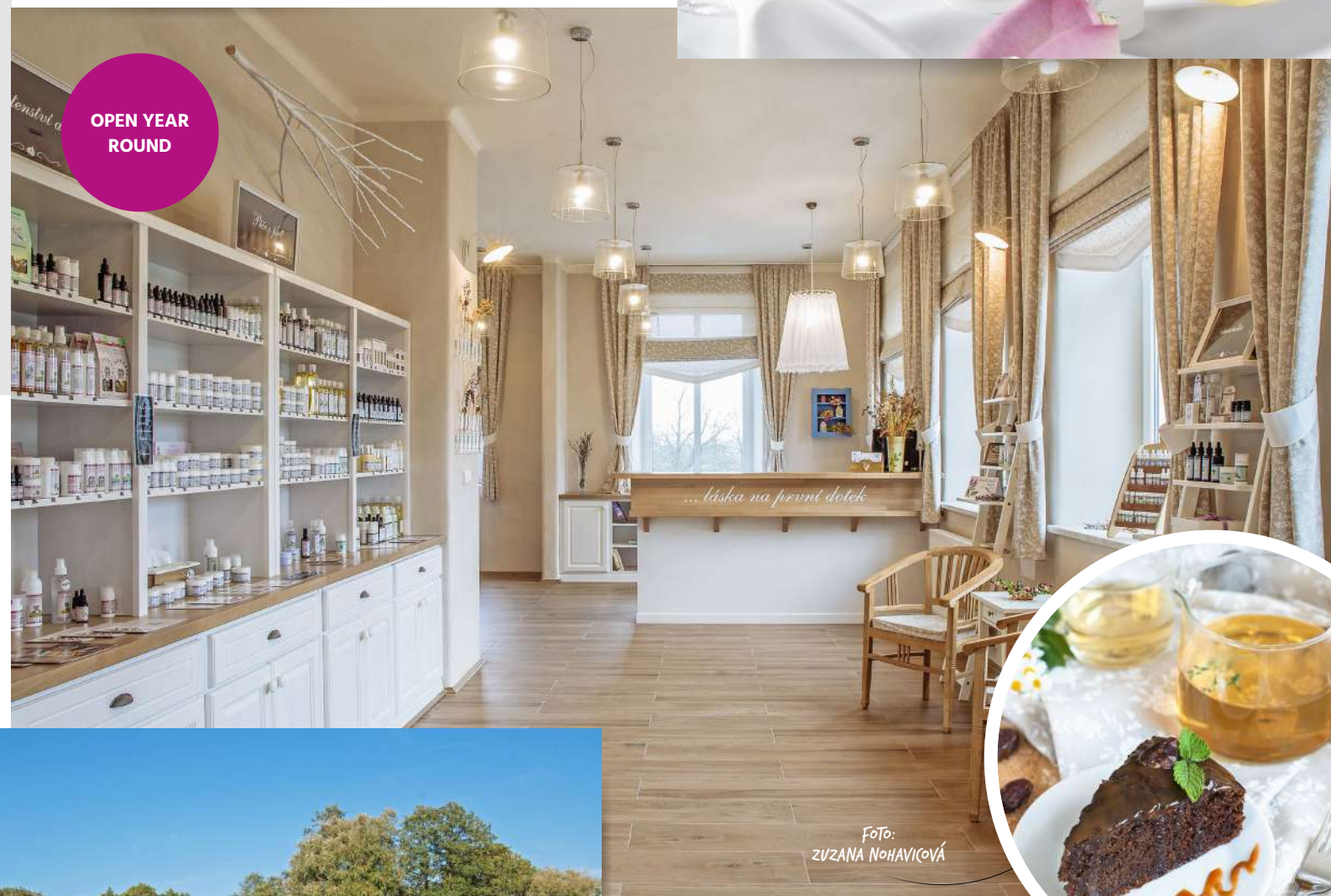


www.
zdravakavarnaemavik.eatbu.com

Soothing aromas for every day

Bohemian-Saxon Switzerland is, without a doubt, a highly attractive destination. It's the site of Bohemia's first nature trail, known by the name of its founder, Rudolf Kögler, who was a native of the area with a passion for geology and hiking. Beyond the usual tourist attractions, the astute visitor will find a range of interesting businesses whose products they may already use without even knowing it. The legendary fish-shaped pocketknife? It's from nearby Mikulášovice. Nobilis Tilia organic cosmetics? They come from Vlčí Hora just outside of Krásná Lípa.

From the beginning, the company has looked beyond its product development and sales. An integral part of its philosophy for sustainable enterprise is support and development for the neighboring area, combined with philanthropical awareness and education projects. On Vlčí Hora itself, you'll find a unique botanical garden founded on the principals of permaculture and bio dynamics. It is open year-round and guided tours can be scheduled. Among species cultivated here are medicinal herbs, roots and useful plants both common and obscure. Visitors learn about the mutual interaction of flora with its environment. The garden recently underwent a major transformation. A gazebo offers a spot for relaxing, and there's a unique flower mandala. Plans for the coming year include a natural play area for children and a new information system.



OPEN YEAR ROUND

The visitor center on Vlčí Hora offers pleasant year-round seating in its herbal teahouse as well as a gift shop. The construction of the visitor center several years ago was one of Nobilis Tilia's many projects for support and development of the local area. The visitor center found its home in an old school building, abandoned for decades. In addition to the shop and teahouse, there is space for holding lectures and workshops. Seminars and courses for the specialized and general public focus on subjects such as aromatherapy, massage, and spa cosmetics. The center also provides Studio consultations, where cosmeticians and massage therapists help clients choose the care products best suited to them. A schedule of upcoming events is available on the Nobilis Tilia website.

www.nobilis.cz

Below the summit of Vlčí Hora you'll find the headquarters of Nobilis Tilia, a local company engaged in the development, production, and sale of organic cosmetics with therapeutic effects. Over the past twenty years they have introduced natural, organic products for all skin and hair types, and developed natural products for infants, children, and expectant mothers. Today, Nobilis Tilia offers the largest selection of products on the market with CPK and CPK BIO certification.



A NEW GAZEBO PROVIDES SHADE IN HOT WEATHER.



Foto: ZUZANA NOHAVICOVÁ



NOBILIS TILIA
Vlčí Hora 147
407 46 Krásná Lípa
+420 412 383 421
nobilis@nobilis.cz



Foto: ZUZANA NOHAVICOVÁ



Central Bohemian Uplands

The Bohemian Uplands have an atmosphere all their own, with gorgeous natural scenery, great heaps of basalt, and castle ruins dotting the summits all around.

A diverse palette of pastures, meadowlands, and fields complements this multifarious volcanic mountain range with its ancient forests. Its highest peak is Milešovka (837 meters above sea level), rising 350 meters above the surrounding countryside and offering an ideal all-round view. Upon reaching the summit, your reward is a rest in the comfortable tourist center at the top. Other uplands mountains worth a visit include Lovoš, Sedlo, Varhošť and the legendary Říp. Each summit provides its own unique view of the surrounding countryside, with peaks crowned here and there with castles and ruins—Hazmburk, Kalich, Kamýk, Košťalov, and Oparno. Natural sites in the area include the Porta Bohemica valley, Plešivec, and Vaňovský waterfall in Ústí nad Labem.



MILEŠOVKA

TIP!

DAYTRIP FROM DĚČÍN TO THE CENTRAL BOHEMIAN UPLANDS

Take the train or bus from Děčín to Těchlovice and follow the red trail to Buková Hora. After a stiff, two-hour climb, you'll find yourself at the top of "Bukovka" 683 meters above sea level. From the Humbolt viewpoint there's a gorgeous view of the Elbe River valley and the surrounding villages. From Buková Hora, take the blue trail to catch the train in Malé Březno, or continue your walk along the red trail to Zubrnice. This pretty village has an open-air museum, a railway exhibit, and plenty of restaurants. There are buses from Zubrnice back to Děčín and on weekends and holidays from April through October the Zubrnice historic railway runs trains (www.zmz.cz). Take a bus or train and transfer at Malé Březno or Velké Březno. You'll cover about 10 km on foot—the trip lasts four or five hours.

Other tips in the Central Bohemian Uplands around Děčín

- Velký Chlum observation tower
- Vrabinec ruins
- Velké Březno palace



The Central Bohemian Uplands are an easy daytrip from Děčín. Nearby are the Verneřice Uplands with their dominant peak, Sedlo, the fourth highest mountain in the Central Bohemian Uplands. Sedlo offers walkers a unique ridge-top hiking trail. There are a number of panoramic spots nearby, on the summits of Kohout, Varhošť, Velký Chlum, or above Náčkovice. These scenic spots offer views of the countryside from the Giant Mountains to the Jizersas, Ještěd, and the Lusatian Mountains to Milešovka, Lovoš, and other peaks. But beyond its hills and observation towers, Verneřice is also home to the Vrabinec castle ruins, folk architecture in Zubrnice, and the pretty village of Levín.



STŘEKOV CASTLE, ÚSTÍ NAD LABEM

www.stredohori.cz

CITY OF LITOMĚŘICE

Terezín, a citadel established in 1780 by Emperor Joseph II as a defense point against attacks from the north and named for his mother, Marie Theresa. In its day, Terezín was the pride of northern Bohemia. Today it is better known for the tragic role it played during the Second World War. The history of the town and its fortress is presented in an exhibit at the visitor center there. You can also walk the battlements, or take a guided tour of its underground passages. The Terezín memorial in the inner fortress memorializes the events of the Second World War.

Culturally the Central Bohemian Uplands are an interesting region too. Tourists can visit castles such as Střekov, Budyně nad Ohří, and Litoměřice, as well as palaces like Ploskovi- ce, Velké Březno, Roudnice nad Labem, and Libochovice. Litoměřice is a lovely, historic town with cultural heritage status, and has been the seat of the Bishop since the 17th century. The historic town center in Ústěk was made famous in films such as Kolja. Visitors from all over the globe come to



PLOSKOVICE PALACE



TEREZÍN CITADEL



České středohoří

Destinační agentura České středohoří, o.p.s.

Agentura pro cestovní ruch
v destinaci České středohoří a Podřipsko

Komenského 748/4 / 412 01 Litoměřice

info@ceskestredohori.info
+420 412 871 140 / +420 412 871 141

f DAČeskéstředohoří

Šluknov Palace

... a phoenix rises from the ashes

HOURS

OPEN YEAR-ROUND
Monday – Sunday
9am – 12pm / 12:30 – 5pm



www.
mesto-sluknov.cz



THE REGIONAL VISITORS CENTER IS
LOCATED ON THE GROUND FLOOR



/mestosluknovasluknovskyzamek



/sluknovskyzamek

Bohemia's northernmost city, Šluknov, boasts a lovely Renaissance palace built in the latter 16th century by the Schleinitz family on the site of an older Gothic keep. The palace was the economic center of the region until 1945 when it was transferred to municipal ownership. It became home to a museum, a library, and offices. A fire in 1986 left the building in ashes and it looked as though its fate was sealed. However, against all hopes, the city managed to sell the ruin and step by step it was gradually renovated and funds were found to open it in its entirety. The palace re-opened its doors on the last Saturday of June 2007 with a grand festival. It has become an annual tradition that a festival takes over the palace and grounds on the last Saturday of June with historic style. Today it is one of the city's major cultural events.

The palace offers a First Republic tour, where visitors can see all areas of the palace, including historical rooms with original

items on display. The tour is dedicated to the last lord of the Šluknov estate, Ervín Leopold Nostitz-Rineck and takes you through his study and living quarters—his office, wardrobe, bedroom, nursery and dining room. Tours are offered seven days a week.

The palace hosts weddings and celebrations, exhibits, and other events. Castle facilities are available for private rental.



Centrum Pivovar shopping complex

Centrum Pivovar occupies an abandoned brewery complex at the center of town. The unique, multi-purpose center fuses original parts of the historic brewery buildings with modern architectural elements.

Děčín's enclosed shopping center welcomes visitors with a diverse mix of shops, a microbrewery restaurant, cafés, a supermarket, services, a family fun center, and plenty of parking.

This year the center celebrates its fifth anniversary with a program including contests, a Valentine's Day party, an Elite Model Look casting call, and creative workshops for children.



HOURS OF OPERATION

DAILY 8AM – 8PM

Sofijská 2/3 | 405 02 Děčín



www.
centrumpivovar.cz

KAPITÁN MICROBREWERY AND RESTAURANT

Kapitán occupies a large space with an arched, brick ceiling on the ground floor of the shopping center. The restaurant has earned a dedicated following for its good food and pleasant service. There's something for everyone... a selection of daily lunch specials, a full dining menu, and house specials. The restaurant offers outdoor seating in the summer, with live music once a month. Beers are brewed on site in the restaurant's microbrewery. The house lager, Kapitán, is very popular, and it's worth

trying other house brews as well—Admirál, Kormidelník and seasonal specials. Come enjoy a good meal. We look forward to your visit.

TIP!

MIDDAY SIESTA EVERY
WEEKDAY
10AM – 2PM
REDUCED ENTRY FEE



www.
pivovarskarestaurace.com



www.
decin.hopsarium.cz

National parkland breweries

Bohemian Switzerland is more than just pretty scenery, landmarks, and folk products. It offers something for beer lovers too!

There are several interesting breweries in the national parklands, each brewing its own select beers. Among them are Falkenštejn in Krásná Lípa, Kocour in Varnsdorf, Kotouč in Česká Kamenice, and Kapitán and Nomád in Děčín.

Each has its own charm. They all draw from a strong beer-making tradition going back generations and, at the same time, brew their own specialties, beers you won't taste anywhere else. Discover these local breweries yourself as you explore the area...



KOCOUR BREWERY

VARNSDORF

BEERS YOU CAN TRY:

BLONDE LAGER 12°, STUDENT TEN 10°, CHERRY LAGER 12°, DARK LAGER 12°, ABBEY 18°, V3 RAUCHBIER 14°, HAKA NZ LAGER 15°, CATFISH 11°, IPA SAMURAI 14°, RAUCH WEIZEN 13°, STRAWBERRY PORTER 14°, CHERRY PORTER 14°

WHAT ELSE

A sit-down restaurant, lodging in the brewery complex, an e-shop with plenty of Kocour souvenirs

PIVOVAR KOCOUR

Rumburská 1920 / Varnsdorf



www.pivovar-kocour.cz



FALKENŠTEJN BREWERY

KRÁSNÁ LÍPA

BEERS YOU CAN TRY:

BLONDE LAGER 11°, OSTROFF 12°, DARK SPECIAL 14°, AMERICAN PALE ALE 13°, SVIŽNEJ EMIL 9°, BOHEMIAN PALE ALE 12°, ZKOUŘENÁ ČARODĚJNICE 13°, NÁHLÁ SMRT LEMMY 22°, SVATÁ KOZA 16°, STODOLECKÝ LIŠÁK 11°, VÝROČNÍ 13°

WHAT ELSE

What else? The brewery gives you a great meal in its house restaurant and you can also spend the night. There are brewery tours with tastings, but make a reservation ahead of time.

PIVOVAR FALKENŠTEJN

Křínické náměstí 7 / Krásná Lípa



www.pivofalkenstejn.cz



NOMÁD BREWERY

DĚČÍN

BEERS YOU CAN TRY:

CHMELOŽROUT 10°, WARRIOR 11°, SEDMIKRÁSKA 11°, ADELAIDE 11°, DĚČÍNÁK 11°, PELIKÁN 16°, VÁLEČNÍK 13°, VYMÍTAČ ĎÁBLA 22°

WHAT ELSE

Nomád is interesting in that, until it settled in its current location below Děčín Castle, it was a sort of nomadic brewery without its own equipment, with only its recipes to its name... thirty different beers. There are usually a dozen brews on tap at a time, with a constantly evolving selection.

PIVOVAR NOMÁD

U plovárny 10 / Děčín



Pivovar Nomád



KOTOUČ BREWERY

ČESKÁ KAMENICE

BEERS YOU CAN TRY:

KAMENICKÝ ZLAŤÁK 11°, KAMENICKÁ PODKOVA 12°, KAMENICKÝ RYTÍŘ 12°, KAMENICKÝ POKLAD 13°, KAMENICKÁ KAPLE 14°, KAMENICKÝ KNÍŽE 13°, KAMENICKÁ STŘELA 8°

WHAT ELSE

In addition to the brewery restaurant and pizzeria, the complex has its own distillery and juice presses. There is also a gallery. Brewery tours on Fridays and Saturdays by appointment.

PIVOVAR KOTOUČ

Pivovarská 3 / Česká Kamenice



www.pivovarkamenice.cz



Děčín Synagogue

Děčín's synagogue is an Art Nouveau building in the Podmokly quarter at the foot of Pastyřská Stěna.

A collection for the construction of a synagogue was taken in 1892, a few years after the Jewish congregation was established in Podmokly. Many Jewish business owners and sponsors contributed. In 1901 an association was formed to oversee the establishment of a house of worship and it started negotiations with landowners. The congregation purchased a garden lot with a small gymnasium in what is now Žižková ulice from a German physical fitness club. It was here that the synagogue was built, in an oriental Art Nouveau style, in 1907. The builder was Putz and Weber; the cost, 100,000 Austrian crowns.

On 1 September 1907 the new synagogue was opened by Rabbi Max Freund with the words "This is the greatest day a community can celebrate. Not for pride and fame, but to honor the lord, he who established the new temple. It is society's mission to keep the faith for future generations." Eleven pews set in two rows allowed 110 men to participate in services. A balcony, reserved for women, was reached by a winding, metal staircase. On the upper level there was a service flat for the *shammes*.



ŽIDOVSKÁ OBEC DĚČÍN

Žižkova 4 / 405 02 Děčín IV
+420 412 531 095

www.zidovskaobecdecin.wz.cz

THE SYNAGOGUE BEFORE WWII

A contract, dated 7 October 1966, was closed between the synagogue society and the district national committee for rental of the building for a period of 25 years. A year later the district archive was moved in. On 1 December 1987, the Jewish community sold the synagogue to the District National Committee in Děčín for 100,000 CZK. In 1993 the DNC returned parts of the property to the community and on 14 June 1994 in a formal agreement it donated the property back to the Jewish Community of Děčín.

At that point, the synagogue was in a terrible state of disrepair. Its interior had been entirely stripped, including its most important item – the Torah. All that remained were bare walls. On 18 April 1996 the State Heritage Institute registered the synagogue on its list of cultural landmarks in the Czech Republic. By 30 June 1996 the district archive had moved out. In 1997 renovations were begun, so that the building could serve the community with worship services and cultural and social events. Renovation work is still underway.

The synagogue is the natural hub of a Jewish community, and Děčín is no exception. The building has become a major religious and education center for its congregation of 100 members and it's no doubt that it has taken on a more visible role in the cultural life of the city as a whole.



Vladimír Poskočil

...
ONE OF DĚČÍN'S LEADING PERSONALITIES. IN THE MID 1990S HE STOOD BEHIND THE RESTORATION OF THE SYNAGOGUE IN DĚČÍN. HE WAS ALSO A THREE-TIME VETERAN WORLD CHAMPION IN THE JAVELIN THROW.

The Podmokly synagogue escaped the fate of many temples in Bohemia's Sudeten region. It was saved from the mobs on Kristallnacht through the personal intervention of mayor Anton Kreissl (died in Rabstein, 30 June 1945), who argued that burning it down could damage neighboring buildings. His successor, Julius Stumpf (1939 – 1942) was under constant pressure to destroy the structure, but ultimately he did not do so. He begged a lack of available workers to do the job, then argued that the building could be put to use. The synagogue, stripped of its religious symbols, served during the occupation as a storehouse for the Wehrmacht, from 1941 as a clubhouse for the Hitler Youth, and again as a military storehouse. There is virtually no record of how the building was used in the years following World War II.

STEPPING OUT IN DĚČÍN

TIP

The main event in Děčín every year is the **City Festival in May**. It starts with fireworks and for two or three weeks the city is buzzing with Labefest, the Adrenalin challenge, and other happenings at the castle and elsewhere.

In the mood for a night out? Want to catch a movie? Here's an overview of the places and events that keep Děčín hopping.

If you're visiting Děčín in the wintertime, don't miss the lighting of the Christmas tree and the holiday market.



www.slavnostidecin.cz



Municipal theater www.divadlodecin.cz

Theater lovers should check out Děčín's municipal theater for plays and concerts. The theater is closed over the summer.



Sněžník outdoor cinema www.kinosneznik.cz

In the summer the movie theater closes its doors and all of the action moves to the castle courtyard. In winter months there are films every day.



Škuner music club www.parolod.cz

Kick up your heels every Friday and Saturday in this local club, where Fridays are usually theme nights and Saturdays rock to the oldies. Open 10pm – 4am.

Střelnice social center www.strelnicedecin.cz

This beautiful venue is the site of the annual municipal ball, countless graduation dances, hunters' balls and retro dances. There are also boxing matches, concerts, hobby markets, and dancing on the outdoor terrace. The center has its own pub-style restaurant with indoor and outdoor seating.

Le Garage Noir www.garagenoir.cz

This little club hosts rock, rap, pop, and electro concerts, as well as performances and talk shows.

CULTURE ANY DAY OF THE WEEK



Visitor information center

Karla Čapka 1441/3 | 405 02 Děčín 1
+420 412 532 227 | info@idecin.cz

Visitor information center main station

Čsl. mládeže 89/4 | 405 02 Děčín 4
+420 727 975 773 | info@idecin.cz

www.idecin.cz

[f decinproturisty](https://www.facebook.com/decinproturisty)

[i idecin.cz](https://www.instagram.com/idecin.cz)

Published by
The City of Děčín
Mírové náměstí 1175/5 | 405 38 Děčín 4

Photos: P. Špánek, V. Sojka,
Z. Patzelt, J. Šťastný, J. Rak, M. Rak, A. Černohous,
M. Ulehlová, internet
Graphics: Studio Maglen s.r.o.
English: Beth Tonder



*We have been with you
for almost 30 years.*

www.auto-horejsek.cz

We offer all services:

CAR SALES AND SERVICES

new and used cars

original parts and accessories

**branded automotive clothing
and accessories**

Gerhard Horejsek a spol., s.r.o.

Oblouková 1416/9, 405 02 Děčín, Tel.: +420 725 800 380



ŠKODA



Užitkové
vozy



Das **Welt**Auto.



ŠKODA Plus