



idecin.cz

TOURIST MAGAZINE

DĚČÍN IS DIVINE

Na výletě se oddělil s tím,
že půjde vlastní cestou.
Nezapomínejte zlobit.



Volkswagen T-Roc. Zdravě sebevědomý.

Volitelný pohon všech kol 4MOTION Vás podrží i ve chvíli, kdy se rozhodnete pro neočekávanou zkratku. Čtveřice jízdních profilů a sportovní podvozek s progresivním řízením zajistí, že pánem vozu zůstanete na sněhu i nepevných cestách. Každá vyjížďka může být skvělá zábava. Zdravě sebevědomý T-Roc se postará, abyste neuklouzli.

Nečekáme na budoucnost. Tvoříme ji.
www.volkswagen.cz/troc

Kombinovaná spotřeba a emise CO₂ modelu T-Roc: 5,0–6,8 l/100 km, 116–155 g/km.
Vybavený model může obsahovat prvky příplatkové výbavy.



Volkswagen

Autorizovaný prodejce **Volkswagen Gerhard Horejsek a spol., s.r.o.**
Oblouková 1416/9, 405 02 Děčín, tel.: 412 589 925, www.auto-horejsek.cz

Welcome to Děčín

Děčín is a great place for an active holiday. If you're someone who just can't sit still, you'll have a ball here.

Love adventure? Looking for new challenges? Děčín is your ideal vacation spot.

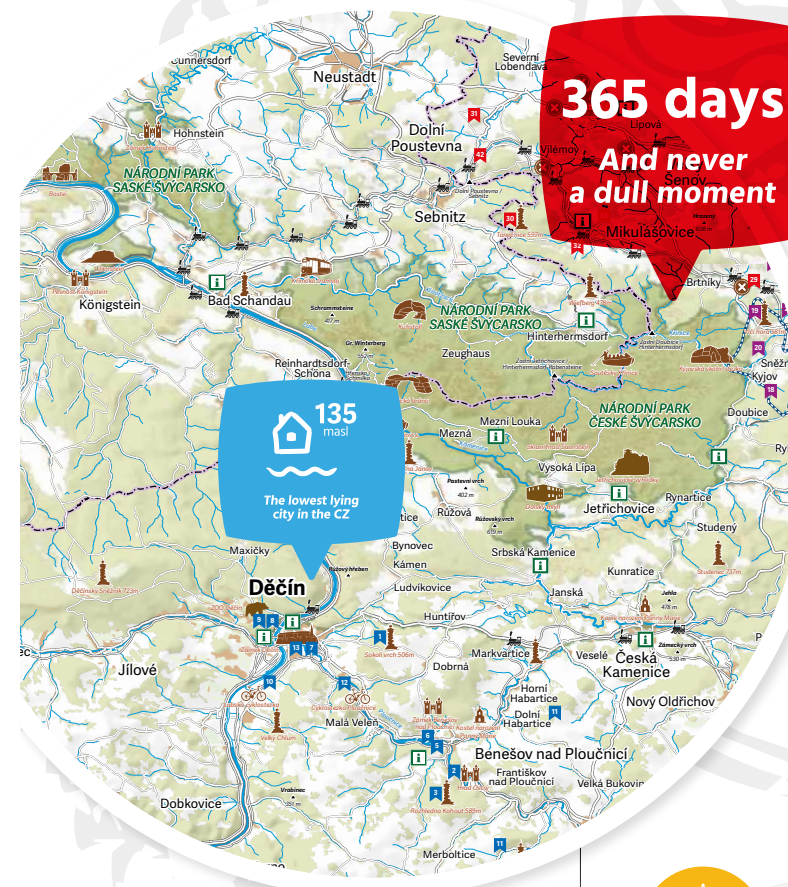
Northern Bohemia is often overlooked by tour operators, but once you've discovered it, you'll find yourself coming back time and again. The heart of the North, Děčín is the lowest lying city in the Czech Republic, located on the country's greatest river, the Elbe, and ideally situated to offer a grand look at Europe's deepest sandstone canyon. It's a place of superlatives, ready to satisfy even the most demanding traveler. A diverse natural setting and an abundance of cultural landmarks will make your stay here unforgettable.

First-time visitors will be struck by the verdant surroundings, the many romantic nooks, and the lovely views. The Elbe River offers opportunities for boat and raft excursions. You can sip a cup of coffee from the deck of a paddle wheeler as you watch rock climbers scale the cliffs. The view can just as easily be taken in from astride a bicycle; the popular international bike trail, the Elbe Cycle Route, follows the river through this region as it makes its way from the source all the way to the North Sea.

Cyclists come into their own in Děčín. Major bike trails include the Ploučnice Trail and the Ore Mountains Trail. Each has its own character, offering great rides for demanding bikers and families alike.

If you're drawn to impossibly sheer cliff faces and want to try your hand at scaling a sandstone bluff, but you're not really an experienced climber, you can take advantage of the Czech Republic's largest via ferrata complex. Located on the riverbank in the heart of town, a network of 16 anchored climbs of various difficulties ascends Pastýřská stěna (Shepherd's Bluff). And the 100-meter climb to the top can be conquered by any reasonably active child. There are experienced instructors available to help you on your way. After about an hour of effort, you'll be rewarded with a gorgeous view of the city, the castle, the canyon, and the River Elbe. Once atop Shepherd's Bluff, you can visit the city zoo or set off on one of the area's marked Nordic walking trails. Refreshments are available at the restaurant topside.

And if that's still not enough, you can strike out for the surrounding countryside, where Bohemian Switzerland awaits you in all its glory.



The info center
can get you sorted



BRIGHT
IDEA



LIBRARY

Karla Čapka 1441/3 / 405 02 Děčín
T +420 412 532 227 / E info@idecin.cz



MAIN RAILWAY STATION

Čsl. Mládeže 89/4 / 405 02 Děčín
T +420 727 975 773 / E info@idecin.cz



Děčín is a city to be conquered by bike

The monumental Elbe canyon opening out before you here is best seen by bike. There are trails for cyclists of all ages and abilities. Got your doubts? Here are a few examples...

Děčín is a crossroads for three major bike trails

The best known and most heavily used trail is the Elbe cycle route, which follows the contours of the Czech Republic's greatest river, the Elbe. Signposted here as bike route 2, it's also part of EuroVelo 7. The trail follows the breathtaking Elbe canyon, running straight into the heart of town, crossing the baroque Old Town bridge, and skirting the huge castle bluff (where you'll want to hop off your bike for a stop at Děčín Castle and its gardens). You're sure to run into the castle's

The Elbe Cycle Route



The most frequented cycle route in the CZ

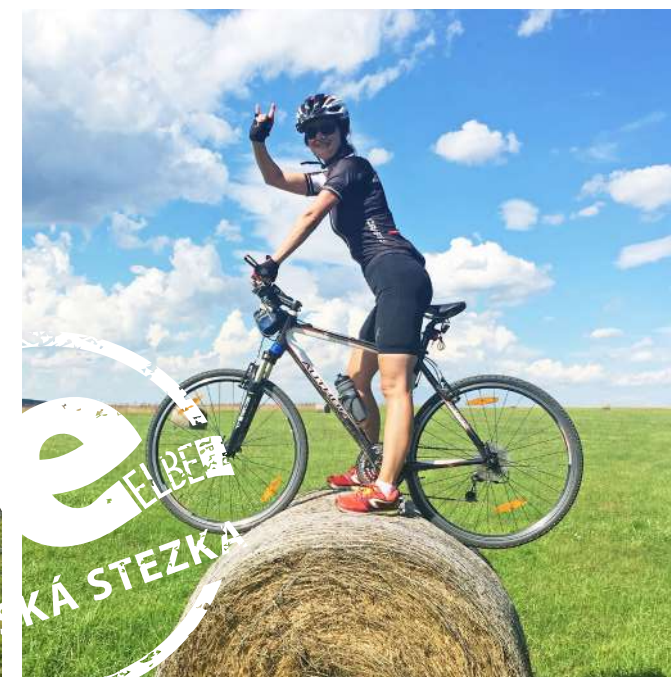
resident peacocks as you ramble the grounds. Stop for a snack in the castle restaurant or nod off under a tree on Marian Meadow. You can head for the new municipal library to have a look at the visitor information center, where the staff not only hand out advice, but can brew you a steaming cup of coffee (roasted locally, of course). Once you've seen all that Děčín has to offer, the Elbe cycle route will take you to our German neighbors in the north. On the way you'll ride along Europe's deepest sandstone canyon, a tremendous place for rock climbing; you can watch tiny figures scaling the cliffs as you pedal past. Since Děčín is the lowest lying city in the country, the route is easy and level, and is suitable for all cyclists.

23 The Ore Mountains High Road

Mountain bikers will be on the lookout for more demanding terrain. They'll find a great ride on the Ore Mountains High Road (Krušnohorská magistrála), route 23, which connects Děčín with the Ore Mountains. The trail takes you up the highest table mountain in the Czech Republic, and one of the dominant landforms in the Děčín area, Děčínský Sněžník. On top is one of the country's oldest stone watchtowers. If you lack pedal power, a special bus for cyclists will bring you and your ride to the top. Buses run daily during the cycling season. If you don't want to stay on the trail to Komáří Vízka (another 42 km), that's fine; there are numerous trails on Sněžník that offer a challenging ride.

15 The Ploučnice Trail

Another great option for a cycling trip is the Ploučnice Trail, route 15. It branches off from the Elbe cycle route and is a popular choice on hot summer days because it runs along the cool, shady banks of the Ploučnice River and there are lots of great spots for a refreshing splash in the stream. This trail is also a fairly easy ride, and can be enjoyed by the whole family. Top off your trip with a visit to the chateau in Benešov nad Ploučnicí, a fine example of Saxon Renaissance architecture, or continue to the Ostrý castle ruins or to the observation tower on Sokolí vrch.



Also worth noting is the truly gorgeous panoramic trail along the edge of the Elbe valley. This demanding ride rewards you with breath-taking views and fun single-track trails. It's a 25-kilometer loop that stops at several scenic points and crosses the river by ferry. And if your strength begins to lag, there are plenty of little restaurants along the way.



For route descriptions and details see the **ADRENALINE ACTIVITIES** brochure.



An overview of bike trips in and around Děčín is available in the **CYCLING TRIPS** brochure, available in the info center.

INFO  **idecin.cz**

CYKLOPUJCOVNA.COM

BIKE, SCOOTER, AND VIA FERRATA SET RENTALS
+420 739 561 932

So, you see, there's never a dull moment here when you're on two wheels. You'll find more tips for bike trips on the city's visitors website.

Děčín Castle by the numbers

5 castle tours

The castle tours “The Golden Age of Děčín Castle” and “A Visit with Prince Franz Thun” take you through the private chambers of the south and west wings. “Baroque Treasures” includes the exquisite castle stables, the stunning rose garden, and a walk through a covered passage to the Church of the Ascension of the Holy Cross.

2 gorgeous gardens

The lovely Baroque rose garden on the north face of the castle bluff is one of the most artistically interesting areas of the castle grounds. In the latter 19th century it was famed far and wide for its roses. The terraced gardens on the south slope were known for their exceptional collections of orchids, camellias, azaleas, and rhododendrons.

292 m on the Long Drive

A European rarity, the castle’s unusually long approach drive was a part of the Baroque face-lift that the complex underwent in the 17th century. For two-thirds of its length, the drive is cut into the living stone of the bluff, a feat accomplished by miners from nearby Krupka, who toiled at it for six years.

More than 60,000 visitors

In 2017 the total number of paying visitors to the castle was 66,000.

150 rooms

Děčín Castle is one of the largest castles in the country. Most of the rooms are open to the public on castle tours, others are venues for concerts, weddings, private events, or municipal ceremonies. Part of the property is used by the State District Archives

Open daily
9 am – 5 pm

Summer months
until 6 pm

292
m

The longest
castle drive in Europe



1808

For 112 years a major German Romantic masterpiece hung here, The Cross in the Mountains (a.k.a. the Děčín Altar) by Caspar David Friedrich. The work was acquired by the Dresden Gemäldegalerie for its new masters section in 1921. A commissioned copy has been on display at Děčín Castle since 2017.



1835

In September 1835, Polish composer Frederic Chopin stayed briefly at the castle. It was here that the composer last saw his own parents. During his stay with the Thuns, Chopin dedicated a piece to the family’s youngest daughter, Juža – it was his waltz in A-flat major, op. 34, no. 1, also known as the Děčín Waltz.

1852

In 1852, for the first time in continental Europe, the world’s largest species of water lily – the *Victoria amazonica* – was coaxed into bloom in one of the castle greenhouses, a feat accomplished by castle gardener Franz Josst.

1854

The castle hosted a tri-partite diplomatic congress of the rulers of Austria, Prussia, and Saxony. Austrian Emperor Franz Joseph I was accompanied by his brand new bride, Elisabeth of Bavaria, whom the public affectionately knew as Sisi.

90,000 books in the Thun library

The castle boasted one of the greatest libraries in Bohemia, with more than 90,000 volumes, 300 manuscripts, and 80 first editions. The famous Czech historian František Palacký mined the collection for its valuable sources relating to Czech history.

www.zamekdecin.cz



/zamekdecin

1932

In 1932 the castle was sold. Its new owner, the Czechoslovak state, established a military barracks here.

4,750,000 CZK

The amount paid for the castle in 1932.

4 armies

In the six decades from 1932 to 1991 the castle served as a barracks.

650,000,000 CZK

The amount spent on renovations since 1991. The castle’s current owner is the city of Děčín.

352 paintings and prints

So far, 352 works from the castle collections have returned to hang in their original locations.





**"BOATS DAILY!
CRUISE WITH US."**



To Königstein

One of Europe's great mountaintop fortresses, Königstein, is set in the Elbe Sandstones on a tabletop mountain above the town of the same name. This popular destination welcomes 800,000 visitors per year. Experience this unique attraction along with a romantic river cruise. The fortress offers sweeping panoramic views of Bohemian Saxon Switzerland. Attractions include Germany's deepest well, the oldest church in Saxony, and the oldest military barracks in the country. There's plenty of time in dock to explore the fortress and the quaint town below.



Welcome aboard!

Riverboat cruises offer a unique perspective of the Elbe Sandstones, historical landmarks, and sites on both the Czech and German sides of the border.

We operate three craft out of Děčín – the Bohemia, the Orion, and the Poseidon – for a great travel experience with refreshments and rolling commentary. In addition to scheduled cruises, our ships are available for chartered trips – company parties, family celebrations, and weddings. We offer a unique setting, professional services, and friendly crew. Our ships operate year-round, with scheduled cruises from April to October and on Advent weekends.

To Hřensko and Bad Schandau

Let your fantasy take over and cast off to discover Hřensko and the spa town Bad Schandau. The boat docks long enough to allow a hike up to Pravčická brána in Hřensko and to see the sites in Bad Schandau (Ostrau viewpoint, historic trams, thermal swimming pool). An easy cruise, suitable for small children.

To Pillnitz

Cruise to Pillnitz castle, one of the most popular sites on the Elbe. Built in oriental style, the castle has vast grounds and gardens with a 230-year-old camellia from Japan (flowering in April and May). In addition to the cruise and a visit to the castle, visitors can stop by the nearby Michelin star restaurant. The boat docks at the castle and from there the walk is easy and level. Lunch and dinner are served on board. A guide is available.

To Kurort Rathen

The Saxon spa town Kurort Rathen is not accessible by automobile – only by train or by boat. A cruise with us to Kurort Rathen to see the Bastei, the miniature railway, the enchanting town center, boat rentals on the Amselsee, and the outdoor theater is sure to please both big and small. Guides are available.

To Dresden

Among the passengers aboard the historic maiden voyage to Dresden in 1841 was storyteller Hans Christian Andersen, who was enchanted by the experience. The cruise rewards passengers with dramatic natural scenery, pretty vineyards, and historical gems such as Königstein, Pirna, Rathen, and Wehlen. On the trip, passengers enjoy live music and refreshments. There is a bar on board with a wide selection of drinks and friendly crew serving on all decks. There is a guide available for tours of Dresden. On-board commentary along the route includes interesting facts about various sites along the river and their relation to Czech history as well as an overview of water transport on the river. Perfect for romantics and amateur photographers.



We dock at Týrš Bridge
+420 777 037 379

www.labskaplavebni.cz



To Meissen and Moritzburg

Our longest cruise route takes passengers to the city of Meissen, passing through the Elbe canyon, the heart of Dresden, and Saxon vineyards along the way. We dock in the heart of Meissen below Albrechtburg Castle. The well preserved town center, includes a central square, the Markt, where you'll find the beautifully restored town hall and a church with a set of porcelain bells. A bus takes passengers to the next attraction, Moritzburg Castle, which served as the setting for the wonderful 1973 Czechoslovak-East German film adaptation of Cinderella. Guided tours are available. For those not interested in castle interiors, admission to the Baroque gardens is free of charge. After the castle tour, a coach takes visitors back to the Czech Republic.

Great Elbe Canyon views



Děčín hospital
– Quaderberg 1st km – Elbe viewpoint 2nd km – Nad Loubím signpost
4th km – Spálenisko viewpoint 5th km – Růžový hřeben viewpoint 6th km
– Belvédér 11.5th km – Labská Stráň 12th km – Suchá Kamenice valley 14.5th km
– Suchá Kamenice 17th km
– riverside Hřensko 18th km

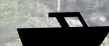
I T I N E R A R Y
km

18

This scenic walk starts at the final stop (Děčín Nemocnice) on city bus 201 and 207 following the red trail into the park across the road. A paved path snakes up the hillside to a panoramic terrace and sandstone obelisk at the top of the Quaderberg bluff. The spot offers a great view of the city and the Elbe canyon. From here the red trail sets off along the ridge. Then the route follows an easy course to the stone pavilion Labská stráž. The red trail then continues along the ridge over the Loubí valley with its sandstone cliffs and rock formations. The path descends to the village of Ludvíkovice. There it skirts the village cemetery and meets the green trail at a signpost marked Nad Loubím.



Trip duration, including lunch



Riverboats
www.labskaplavebnl.cz

Hřensko–Schöna ferry
www.hrensko.cz
 (return by rail Schöna–Děčín)



Bus Line schedule
www.kr-ustedky.cz

300 m

The deepest sandstone canyon in Europe

The trail continues and then climbs a wooded slope to a sandstone shelf over the river. Then it goes on to the crossroads at Růžový hřeben. From here a short detour of 300 m leads to a gorgeous panoramic viewpoint overlooking wonderful sandstone formations. The viewing area, Růžová vyhlídka, has a railing and a bench.

The red trail traces a level course through the forest, taking hikers along the plateau above the village of Labská Stráň. Soon the path arrives at Belvédér, the oldest man-made viewing terrace in Bohemian Switzerland. This cliff-top terrace was built in the 18th century for outdoor concerts and offers amazing views of the river 180 m below. A hotel near the terrace has a restaurant, offering a welcome break for hungry travelers. The red trail leads to Labská Stráň and descends into the enchanting Suchá Kamenice canyon, ending at the road to Hřensko. This is where the journey ends. Hikers can return to Děčín by bus, boat, or train.

Stories from the Past at the Museum

An old diving suit, historical river craft, the remains of early settlers...

Here in the heart of Děčín, residents and visitors alike can relive area history, and especially the Elbe waterway, which comes to life in a unique exhibit at the Děčín District Museum. The museum, a non-profit organization operating under the Ústí regional authority, is housed in the 18th century Thun-Hohenstein hunting chalet in Podmokly, where it offers a wealth of exhibits.

The Development of Elbe Water Traffic



Enhanced with new information, the “Development of Elbe Shipping” exhibit is the only one of its kind in the country. Dozens of models demonstrate the development of watercraft construction on the Elbe in a completely refurbished exhibit dedicated to the history of Bohemian water traffic.

Visitors will learn about the development and growth of shipping over the centuries, engineering the waterway, and the natural environment in the river valley. The installation introduces important milestones

The Town on the Meadow

The Town on the Meadow exhibit brings the city's earliest history to life. Archeologists working on Marian Meadow in the 1980s were able to document the origins and initial settlement of the town. Their discoveries are now on view at the museum. Items include medieval pottery shards, skeletal remains, personal articles made of metal, and other interesting pieces from Děčín's earliest days.



www.muzeumdc.cz

such as the introduction of the steam engine and the foundation of the Elbe waterway authority, references modern construction projects, and looks at water transport as a whole. The information comes to life in images from the museum archives and private collections.

The museum library holds one of the largest collections of material on water traffic and a vast photographic archive of river craft, historic waterways maps for the Elbe and Moldau rivers, construction plans and blueprints, and many other items documenting water transport and shipping.

Visitors will see water transport from ancient days to the present... under the watchful eye of a deep-sea diver – a memorable part of the Děčín exhibit is a historical diving suit dating from the early 20th century.



MUSEUM INFORMATION:
Current information about exhibits and events at the Děčín Museum is available online.

Birds of Děčín

A permanent exhibit “Birds of Děčín” is always a hit with the museum's smaller visitors. Examples of common and rare species that live in the local area are on display in modern, illuminated display cases. The exhibit includes interactive bird songs to enrich the experience.

The Lapidarium

The museum courtyard is home to a statue garden, or lapidarium, where visitors can view sculptural relics from Děčín's fallen monuments. Of special interest are a stone carving of the emblem of the lords of Bünau dating from the 16th century, a grave marker for Count Lev Thun, an absolution cross made in the 15th century, and remnants of columns from Děčín's Loreto chapel. A central place is occupied by a Renaissance portal, moved here when the Quaderberg observation point restaurant was demolished; it frames a statue of Arion of Corinth that comes from the now defunct resort in Dolní Žleb. The collection also includes stone family emblems, border markers, and mill wheels. A gigantic, metal statue of Lenin stands in the lapidarium's rear section as a reminder of the more recent past.



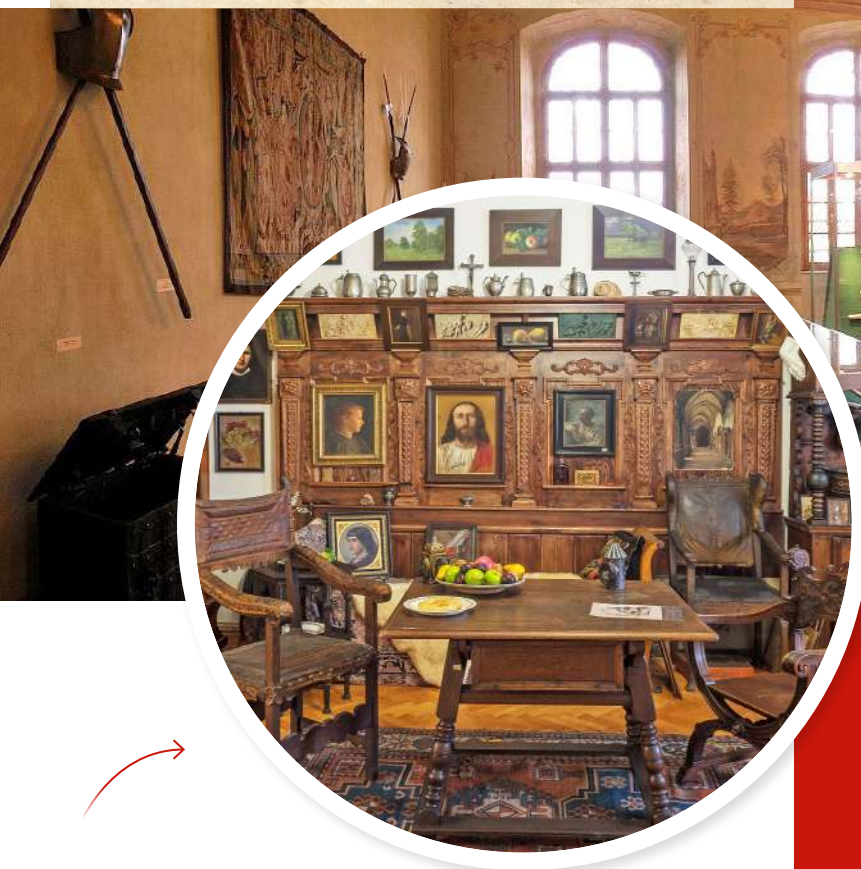
New Exhibits at the Rumburk Museum

The Děčín Regional Museum also operates a branch in the northern city of Rumburk, which has a magnificent collection of its own. In 2017 a new exhibit opened to visitors on the museum's second floor.

An immersive exhibit entitled "Fragments of History" takes visitors into the parlor of the Stradal family, a renowned meeting place in its day, where there are items related to composer Franz Liszt; there follows a visit with the innkeeper at the castle Tolstein, where visitors learn interesting facts about the region and can see archeological artifacts.

The works of Krásná Lípa painter August Frind, which figure throughout the exhibit, provide a glimpse into the stark reality of the Bohemian lowlands. Frind was a master of composition, faithfully rendering the reality of the day in all of its detail. In the "Granite Landscape of Šluknov" exhibit, museum visitors step back in time 600 million years to trace the geological history of the Šluknov region.

The secrets of the shores of the region's largest body of water, the nature preserve Velký rybník, are the subject of the "Treasure in the Reeds" exhibit. Along with the nearby Světlík, it forms a major ornithological area.



FRAGMENTS OF HISTORY
IN RUMBURK

Museum Exhibits at the Castle

The Děčín District Museum operates a satellite exhibit at the Děčín Castle, the castle armory exhibit, which features weapons from prehistoric times through the Second World War, including several pieces from the original Thun collections. The exhibit hall features original wall paintings by Prague artist Jan Hoffman, who painted various parts of the castle. Today, the only other examples of his work can be found in Prague. Visitors will also notice the strikingly restored wooden ceiling of the armory, which probably once had painted ornamentation as well.

Other museum installations at the castle include an exhibit of Baroque art and Děčín cityscapes. These include works from the museum collection typical for the Baroque period, including sculptural pieces and furniture.

The "Děčín Castle over the Ages" installation on the ground floor documents the history of the castle and its occupants (the Bünaus, the Thun-Hohensteins) until the departure of the Red Army.



Museum hours
APR – OCT
TUES – SUN
9 AM – NOON / 1 – 5 PM



www.dolskymlyn.cz



A HISTORICAL SHOT
OF THE MILL

Dolský mlýn has lent itself as the setting for many popular Czech films, especially fairy tales.

SOUVENIR DISKS ARE FOR SALE IN THE
VISITOR CENTER IN JETŘICHOVICE,
AT VILLAGE HALL IN RŮŽOVÁ, OR AT
U KOŠTELA RESTAURANT IN RŮŽOVÁ.

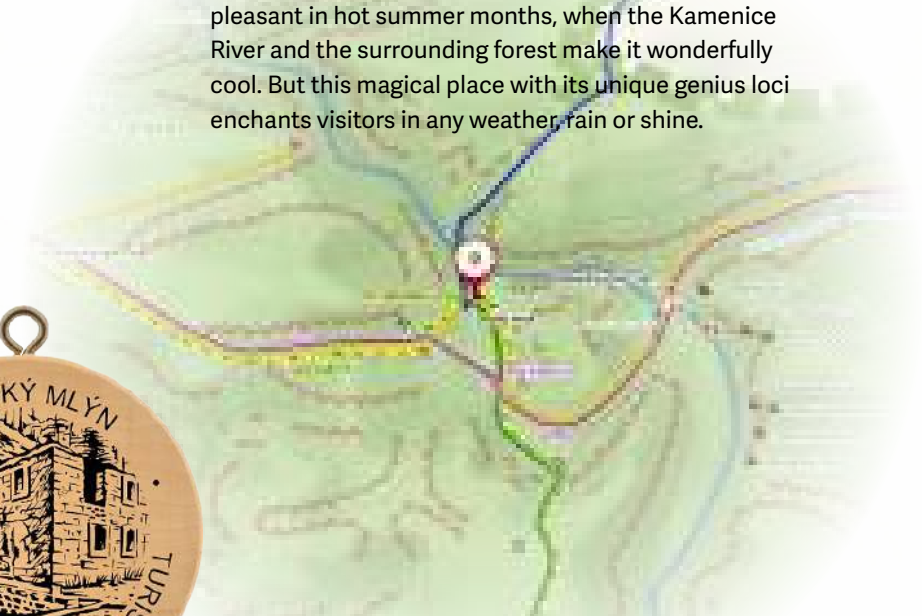


The Mysteries of Dolský Mlýn Mill

A perfect spot for spooks
and spirits

This historical mill in its fairytale setting lies at the heart of the national park. A local grassroots effort aims to protect the mill ruins. The atmosphere makes it a favorite shooting location for filmmakers and it has been featured in numerous projects.

At the heart of the national park, where the rivers Kamenice and Jetřickovická Bělá converge – about 1.5 km from the village of Kamenická Stráň and 3 km from Jetřichovice – lie the ruins of a three-wheeled mill from the year 1515. This enchanting spot was named a cultural landmark in 2007. Outings here are especially pleasant in hot summer months, when the Kamenice River and the surrounding forest make it wonderfully cool. But this magical place with its unique genius loci enchants visitors in any weather, rain or shine.



Read the park
rules



www.npcs.cz

Dining and sleeping in French style

Enjoy a romantic stay at the charming U Růžové Zahrady, a restaurant and guesthouse where an eclectic interior and excellent cuisine come together to satisfy even the most discriminating clientele.

FB/ Restaurace U Růžové zahrady



The establishment's location on the pedestrian zone below the castle rose garden lends it a unique atmosphere. Visitors will take away indelible memories of summer meals on the restaurant terrace and views of Děčín Castle, the rose garden, the sala terrena, the gloriette, the Long Drive, and the Church of the Ascension (a pilgrimage site since 1752, when it acquired from Rome a painting of the Virgin Mary blessed by Pope Benedict XIV). The counterplay of history and modern gastronomy makes this a place to come back to.



GREAT FOOD IN A RELAXED, FAMILY-RUN RESTAURANT

The restaurant interior is eclectic. One unique feature is its open kitchen, which allows diners to see the chef and his crew at work. There is also a breakfast menu to help get the day off on the right foot.

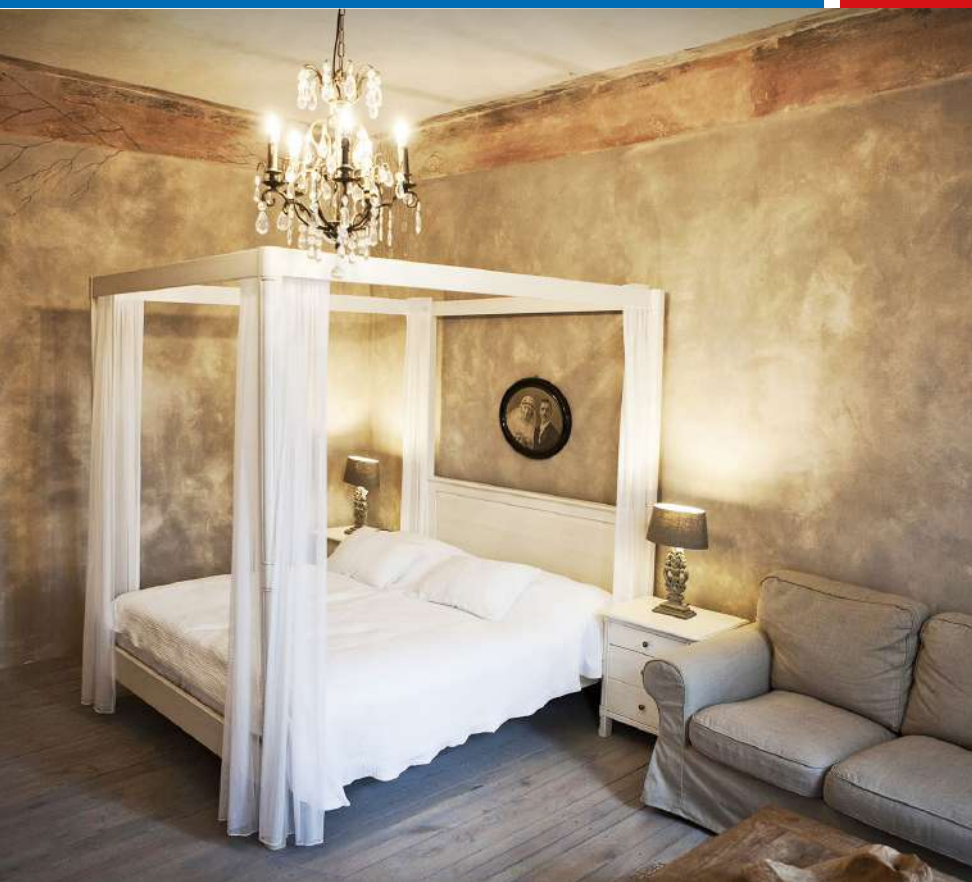
Design enthusiasts, the proprietors gladly fulfill their customer's every desire when it comes to decorating for a special occasion or a private party. They create interesting interiors outside of their own restaurant and guesthouse too. Their interior décor shop, located in the same building, is a great place to browse. There are also two model apartments, each 77 square meters, in the 1892 building.

The guest suites have two large rooms, a stylish kitchen, a closet, and a bathroom with a shower unit and toilet. Secure bicycle storage and electro bike charging are a given. And even those who decide to cook for themselves during their stay should drop by the restaurant for a cup of good coffee or a glass of wine. The dining room, with its unique interior, welcomes children of all ages. Tiny tots will find crayons and paper while big kids will appreciate the Wi-Fi.

The menu offers both French specialties and selected Bohemian cuisine. The kitchen here is always ready to prepare menu items to guest specifications. And, on some evenings, diners can catch some live jazz.



Děčín is an ideal base for visits to the Bohemian-Saxon Switzerland park area and trips to historic Dresden (to see the Sistine Madonna at the Zwinger, for instance). The swimming pool, the via ferrata, and the riverboat dock are all within walking distance.



Křížová 17/15 | 405 02 Děčín
+420 702 994 622

www.uruzovezahrady.cz



idecin.cz/aktivity/via-ferrata

Start here



VIA FERRATA
DĚČÍN

A Via Ferrata in the Heart of Town

There aren't many cities with as many anchored climbing trails as Děčín, where you can experience the thrill of scaling a sheer cliff face right in the heart of town on the Elbe River bank.

WHICH WAY
DOWN?



Sixteen via ferrata routes compete for your attention, offering gorgeous views for climbers from all over the world. With 150 meters of anchored trails of various skill levels, there's something for anyone who's not too afraid of heights. The climb takes about one hour from the riverside to the top of the sandstone bluff and is something even a ten-year-old can master.

An intense experience and stunning views of the castle and river are no longer a privilege reserved for experienced climbers. Qualified guides help individuals and groups on the ascent. And equipment rental is available at the foot of the cliff.



TOURIST MAGAZINE 2018

Děčín's aquatic park is just off the Elbe cycle route. It offers visitors a unique combination of indoor and outdoor attractions. Indoors are a 25-meter pool, a learners' pool, 3 toboggans, a water mushroom, a lazy river, spouts and geysers, massage jets, 2 whirlpools, a wading area, and a restaurant. Upstairs are a wellness center with saunas, a club area with a private sauna and jacuzzi, a message area, a solarium, a gym, a terrace, and stationary exercise bikes.

Aquapark Děčín

This modern recreational sports complex with a natural thermal water source is one of the largest in the Czech Republic.



www.aquaparkdecin.cz

The park's outdoor attractions include 50- and 25-meter pools, a recreational pool with attractions, a massage bench, a lazy river, a wading area, and a stainless steel water polo pool with a 6-meter diving well. Sunbathers can relax on the grassy lawn and there are refreshments available. A natural thermal water source means that the outdoor 25-meter pool is open year-round with water temperatures of around 28 °C.

The outdoor area also includes a children's play area and a sports area with two beach volleyball courts that can also be used for beach football, a football tennis court that doubles for basketball or can hold two pick-up games at one time, and pétanque. Court reservations can be made through Aquapark Děčín's online reservation system.



+420 412 704 211
info@dcsportovni.cz
Oblouková 1400/6
405 02 Děčín

The water park complex also has its own sports dormitory for team accommodations. The facility is suitable for training retreats and courses. There are 10 quad rooms with bathrooms en suite and a common area. Starting in July 2018, the general public will also be able to use the dorm, meaning that cyclists and other visitors can take advantage of the lodgings there.

TOURIST MAGAZINE 2018

Děčín Zoo

Although Děčín Zoo is one of the smallest in Bohemia, visitors consistently rate it as one of the nicest.

The zoo occupies roughly six hectares of land on the wooded slopes of Shepherd's Bluff (Pastýřská stěna). It focuses primarily on endangered and lesser-known species. There are almost 450 animals here representing 150 species.



Děčín Zoo promotional video:



The zoo's pride and joy are its grizzly bears; this is the only Czech zoo with resident grizzlies, and has been since 1983. These half-ton heavyweights have won the hearts of the public and secured a place on the zoo logo.

Other interesting zoo inhabitants include the clouded leopard, the vicuña, the Mishmi takin, the Visayan warty pig, the maragay, the maned wolf, the Eurasian wolf, the crested black macaque, the Canadian porcupine, the red-legged seriema, the giant anteater, the red-necked wallaby, the fishing cat, and many others.



DOGS AND OTHER
PETS ARE NOT
ALLOWED IN
THE ZOO, WITH
THE EXCEPTION
OF GUIDE DOGS



OPENING HOURS

High season (May – Aug)
Low season (Sept, Oct, Mar, Apr)
Winter (Nov – Feb)

ZOO

DAILY

8 AM – 7 PM
8 AM – 6 PM
8 AM – 4 PM

+

HOT TIP!

Zoo visitors get free entry to the Paradise Islands exhibit!

With your zoo ticket, you can visit the Paradise Islands exhibit (Rajské ostrovy) at no extra charge! The offer is valid on the day of your visit to the zoo. It works the other way too; If you start your day with a visit to Paradise Islands and then continue to the zoo, you'll pay only the difference in admissions at the zoo gate.



Paradise Islands Exhibit

Paradise Islands has been a part of the zoo for 11 years. It's located in the heart of town just 700 meters below the zoo.

This unique expo invites visitors to experience the flora and fauna of tropical rainforests, desert habitats, and mangrove coasts. Visitors will see the common clownfish, the red lionfish, the Cuban rock iguana, Weber's sailfin lizard, the pygmy slow loris, the Atlantic mudskipper, the Indian rock python and others. Paradise Islands has the largest saltwater aquarium in the Ústí Region.



www.zoodecin.cz | www.rajskeostrovy.cz

The Fantastic Cliffs of Tiské Stěny

Step into Narnia...
no magic wardrobe required

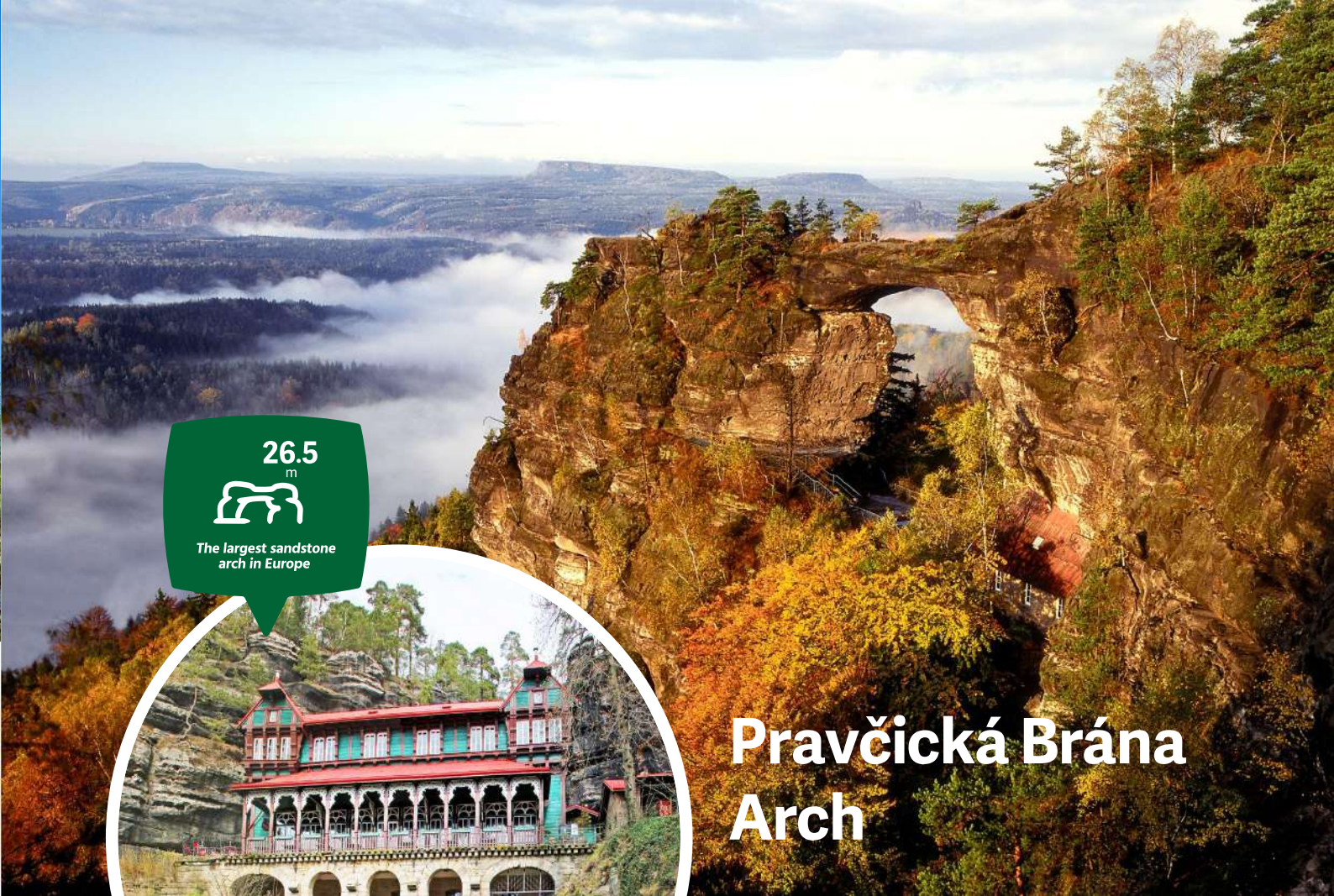
Standing among the cliffs at Tiské Stěny is like being in a fairy tale. This fantastic landscape, often sought out by filmmakers, lies at the edge of the Elbe Sandstones in the village of Tisá. This magical concentration of rock formations surprises visitors with weird shapes resembling animals, figures, and faces. Marked trails covered with fine, white sand, offer seven informational stops.

THE MUSHROOM



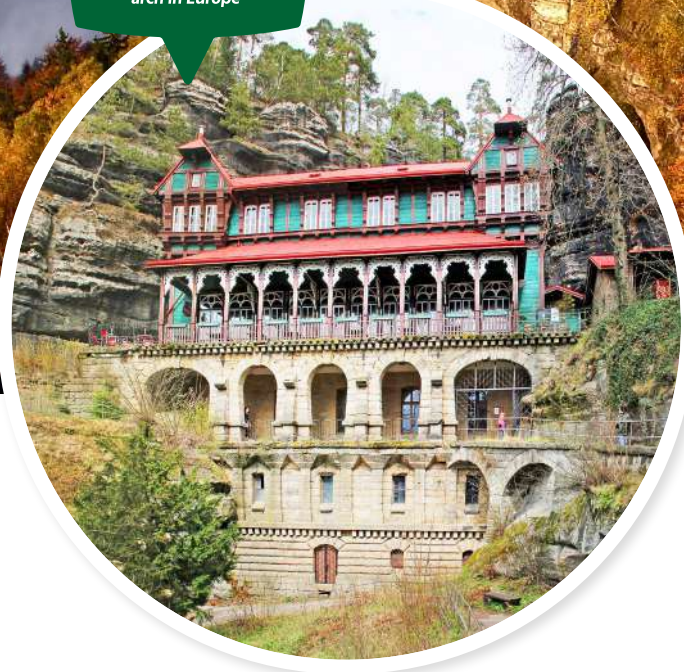
www.tisa.cz

The entrance to the cliffs is in the village of Tisá, where there is parking near St. Anna's Church. You can end your visit with a bite to eat at one of the area's charming restaurants. This is a great outing for families with children practically year-round.



26.5
m

The largest sandstone arch in Europe



Pravčická Brána Arch

Don't miss Europe's biggest natural sandstone arch

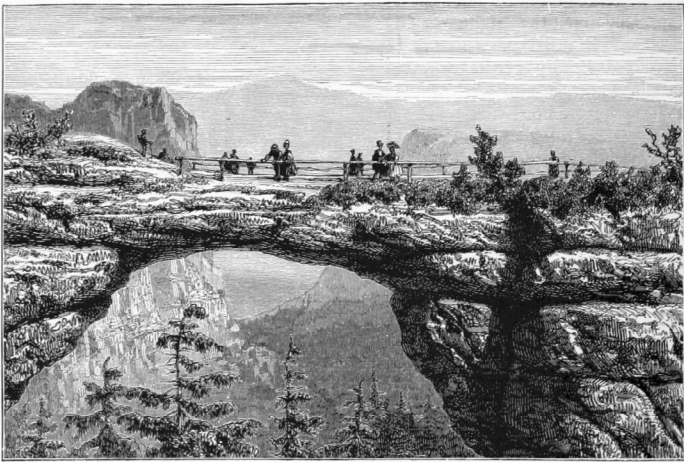
One of Bohemian Switzerland's most stunning natural formations is undeniably Pravčická Brána. This natural sandstone arch, a symbol of the region, is a truly impressive natural formation that no visitor to Děčín should miss seeing. Its great size is even more astounding up close. The arch spans 26.5 meters at a height of 16 meters and is 7 to 8 meters wide. At its narrowest, the bridge is only 3 meters across. The upper surface is 21 meters up.

OPENING HOURS
APR – OCT 10 AM – 6 PM
NOV – MAR (Fri, Sat, Sun) 10 AM – 4 PM



www.pbrana.cz
+420 604 238 209

There are several ways to get to this wonder. A long, easy path leads from the parking lot in Mezní Louka, following the sandstone cliffs for 6 km. A shorter, more demanding route starts at the paid lot in Hřensko, the lowest-lying town in Bohemia, and climbs straight up to the arch.



SAXON SWITZERLAND : THE FREIBSCHTHOR, A COLOSSAL NATURAL ARCH.

BOAT RENTALS D Ě Č Í N

Cast off on the Elbe by raft or canoe and discover the beauties of Bohemian-Saxon Switzerland from the water-way. We have boats for singles, families, or larger groups (schools, summer camps, companies). Combine your trip with a bike ride. Put our experience and local knowledge to work for you in planning your trip.

www.zahranice.com

info@zahranice.com / +420 776 011 495

HUDY MOUNTAIN GUIDE

Tomáš Bardas
mountain guide – horský vůdce
mobil: +420 603 856 982
e-mail: tomasbardas@seznam.cz
www.liveoutdoors.cz



- LEZENÍ NA PÍSKOVCI / SANDSTONE CLIMBING
- VÍCEDELOVÉ LEZENÍ / MULTI-PITCH ROUTES
- VRCHOLY / ASCENTS
- INDIVIDUÁLNÍ AKCE / PRIVATE GUIDES
- KURZY / COURSES

www.liveoutdoors.cz

How much will it cost?

Just 500 CZK rents you a paddleboard, with a paddle of course + a life jacket + a leash (so that you won't lose your board) + a waterproof bag + instruction + equipment pickup when you make land.

.....

You'll need a valid picture ID and a security deposit of 1,000 CZK.

500 CZK
... DAY



Paddleboarding on the Elbe

Here I am, like a gondolier without a boat, or a windsurfer who's forgotten his sail, holding a paddle that's taller than me, poking around in the water... Discover a sport that'll get you in shape and help you lose weight, and as a bonus you'll see the natural beauty of the Elbe River canyon from a completely different angle. This is paddleboarding.

Děčín is finally coming into its own as a popular tourist destination. You can rent your paddleboard just steps away from the via ferrata. So try it now, before all the boards are taken!

DĚČÍNSKÁ JEŘABINKA

Na kopcích okolo Děčína nachází vhodné podmínky k růstu jeřáb ptačí, používaný odedávna v lidovém léčitelství.

Nezaměnitelná pikantní chuť naší jeřabinky bez přidaného cukru Vás jistě osloví.
Obj. alk. 46 %

Valdemar Grešík - Natura s.r.o
Březinova ul., Děčín I, tel.: 412 516 268
Zbrojnická ul., Děčín IV, tel.: 412 513 557

GREŠÍK
VALDEMAR

www.gresik.cz



And that's pretty much it. See you soon.
Oskar

Labské nábřeží 309/35 | Děčín
lodedecin@gmail.com | +420 776 866 644

**OSKAR
OLIAS**

Trips start on the Elbe River bank under Tyrš Bridge and finish in Dolní Žleb at the Grund restaurant (by the ferry). Since this is our first year, we have only this basic route set up. It's also due to the return trip to Děčín. There are several options. You can take the train back from the nearby station, or drivers can return with me by car for their own vehicle, or I can bring your bikes, scooters, or inlines along and you can return along the bike trail to DC under your own steam. Another option is to borrow a bike at Cyklopůjčovna, which is near the paddleboard rentals, and ride that back along the bike trail.

The Kirnitz bike trail: Into the wilds of Bohemian-Saxon Switzerland

www.krinickacyklostezka.cz

This gorgeous cross-border bike trail twists through two national parks. The trip will take you closer to nature, with stretches of real wilderness as well as places where civilization abides in harmony with the local landscape (folk architecture, half-timbered homes, cliff-hugging tram lines).



Kirnitz bike trail:

Krásná Lípa –
Kyjov valley – Zadní Doubice
 – Hinterhermsdorf
 – Neumannmühle
 – Bad Schandau – Děčín

The trail takes you along the roadways, canyons, and resorts of Bohemian and Saxon Switzerland, all the while hugging that duchess of the waterways, the Kirnitz River. The Kirnitz starts in Krásná Lípa and flows through the wilderness of two national parks before joining the River Elbe at Bad Schandau.

- This trip is suitable for average riders, with lots of pleasant, level stretches and descents and just a few, isolated climbs (between Zadní Doubice and Hinterhermsdorf).
- You can take it either downstream or upstream (the latter is slightly more demanding).
- We recommend joining the Elbe cycle route at Bad Schandau to continue your trip either south to Děčín or north towards Dresden.
- For the trip back you can ride the national parks railway from Bad Schandau to Rumburk and Krásná Lípa or the national railway through Děčín and Česká Kamenice to Krásná Lípa. (Note: Trains can only accommodate 5 bikes, so larger groups should reserve ahead with Czech Railways.)
- You can also cross the Elbe by ferry (in Bad Schandau, Schmilka, Hřensko, or Dolní Žleb).
- On the segment between Lichtenhainer Wasserfall and Bad Schandau, you'll be sharing the roadway with cars, buses, and even trams. Be especially careful.
- The route is suitable for electric bikes too. There are rentals available in Krásná Lípa – information is available at the visitor information center.



Practical information:



Difficulty:
 medium
 (family friendly)



Length:
 44 km



Surface:
 Asphalt,
 gravel,
 paved



Highest point:
 elevation
 497 m



Lowest point:
 elevation
 120 m



Total time:
 5 hrs

Your ideal starting point is the village square in Krásná Lípa. Take route 3013 towards Kyjov. Continue on bike trail 3032 along the Kyjov valley to Zadní Doubice and the Czech-German border, then follow German markers to Hinterhermsdorf – this is the longest ascent of the trip (about 1 km). From Hinterhermsdorf, head to the crossroads at Wettnplatz and it's downhill all the way to the Kirnitz (Křinice) near Zadní Jetřichovice.

From here it's an easy descent through the Kirnitz valley along the Kirnitzschtalstrasse to Buschmühl and then along the road to Bad Schandau. As you ride along the Kirnitz, you'll pass a number of beer gardens and restaurants in the old mill houses on the river – there are short climbs to cliff formations, such as the Kuhstall arch, from most of these spots. You'll pass the singing waterfall Lichtenhainer. Entering Bad Schandau, you'll cross to the left bank of the Elbe and continue upstream along the Elbe cycle route (Elberadweg) or you can take the new trail to Postelwitz and take the ferry across at Krippen and join the Elbe cycle route there. Your route continues through Dolní Žleb and ends in Děčín.



A good night's sleep at the edge of town

Are you looking for lodging away from the bustle of the town center, 400 m from the Elbe cycle route and 200 m from a bus stop? Plenty of parking on site? Open nonstop?



www.kocanda-decin.cz

Hotel: +420 736 481 003

Restaurace: +420 739 012 280

All bike trails and family trips lead to Kocanda

A modern restaurant, where a great location and good food meet. Take a cozy seat inside or enjoy pleasant outdoor seating with a view of the Elbe River.

Kocanda Hotel and Restaurant is a great place for the whole family. For the kids, we've put up a new playground, the largest in the region, with its own refreshments stand. Mom and dad can keep an eye on the little ones from the terrace while tasting some of our Bohemian specialties, such as marinated ribs or Pilsner Urquell on tap. History buffs will want to check out the restored 1938 military pillbox. And for those who want to keep in shape, there's an open-air workout area.



This three-star hotel, an easy walk from the center of town, offers quality accommodation for tourists and business travelers alike. Guests can hike the trails in Bohemian-Saxon Switzerland or pursue a range of other sports. The modern facilities offer standard rooms as well as suites with an infrasauna or rooms for those with allergies. CYCLISTS ARE WELCOME here, with full service tailored to their needs.



Kocanda Hotel and Restaurant
Rytířská 77/2 | Děčín 3
hotel@kocanda-decin.cz

Welcome to Růžová!

Voted the most beautiful village in the Ústí Region, Růžová is bursting with things to do, whether you're into hiking, cycling, running, tennis, golf, culture, or just taking it easy.

www.obec-ruzova.cz



Růžová lies in the romantic landscape of Bohemian Switzerland National Park, making it a great place for an active vacation and an ideal base for visits to the area's top tourist destinations. At our guesthouse, **Pension Arosa**, and rental home, **Chalupa Arosa**, you'll be in the right place to start your adventure.

www.arosa.cz



**Pension Arosa
Chalupa Arosa**

Růžová 298
407 14 Růžová

+420 602 193 293



Daytrips:

Pravčická brána arch 10 km / Dolský Mlýn mill 6 km / Růžovský vrch summit 4 km / boat rides in the gorges 2 km / new observation tower on Pastevní vrch 1 km



RESERVATIONS
+420 777 286 963
+420 775 286 963

Hostel Děčín
Čsl. Mládeže 21
405 02 Děčín 4
Info@hostel-decin.cz



www.hostel-decin.cz

Hostel: A comfortable stay in the heart of town

A central location near the railway station and bus lines wins points for this pleasant and inexpensive hostel at the heart of town. In addition, Hostel Děčín has its own gym and sauna.

Pleasant accommodations for tourists, students, and backpackers, a convenient central location, an on-site sport center, a sauna, and a nearby wooded park make this an ideal choice for active travelers. The proximity of railway and bus stations is a plus for tourists heading out to explore the nearby national parklands. Hostel Děčín is more than just a place to lay your head. Friendly staff can help plan outings. And standard services include Wi-Fi, laundry facilities, and bike rental.



Hotel Formule
Pěší 113
405 02 Děčín 33
Nebočady

The hotel is officially rated Hotel ** under the Hotelstars rating system, is certified Cyclist Friendly, and is a member of AHRRCR.



www.hotelformule.cz

Rezervace: +420 412 548 445

Edmund Gorge and the Wild Gorge

These river gorges near Hřensko have been a favorite with visitors from around the world for over 125 years.



A trip to remember



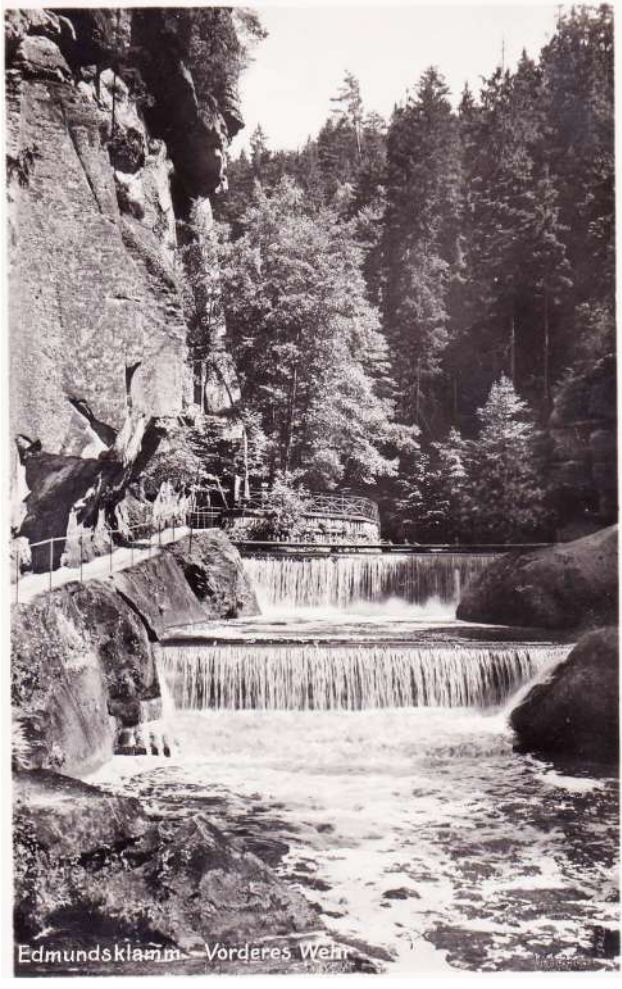
Visitor information center
+420 412 528 344



No bikes on board



Strollers ride FREE



A NINETEENTH CENTURY
VIEW OF THE GORGE

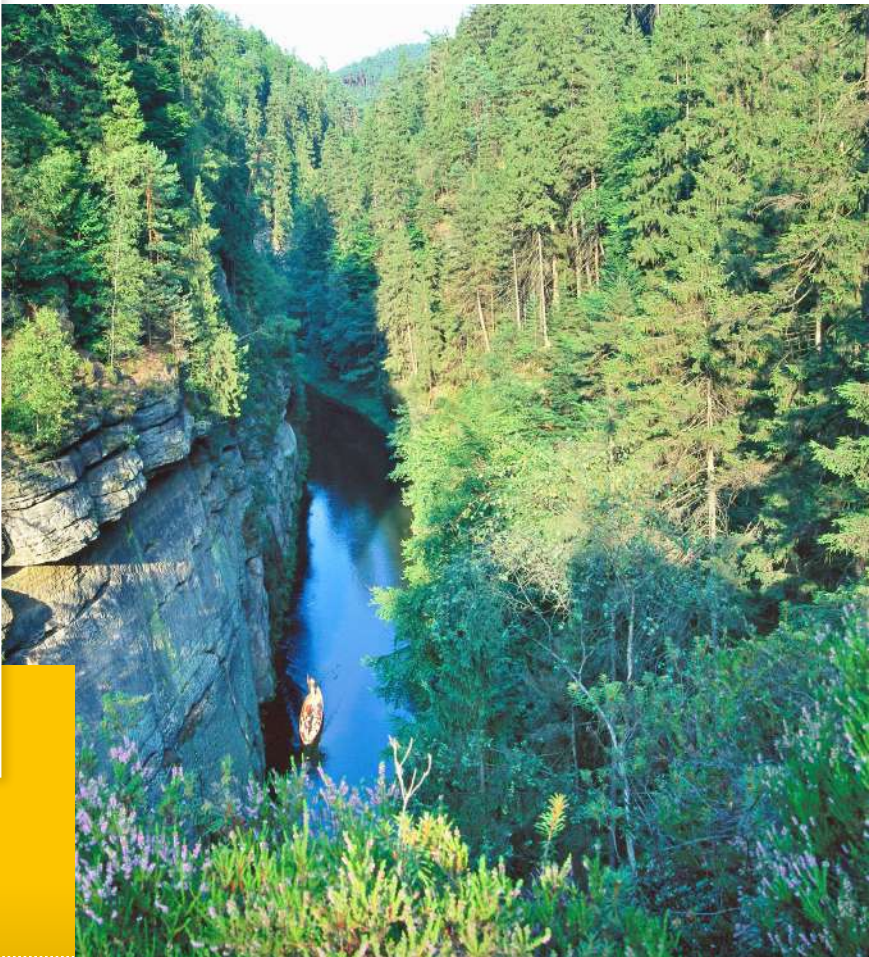
OPEN DAILY
9 AM – 6 PM

The last launch of the day is posted on signs at the entrance to the gorge and varies by season.

A boat ride through the gorge is an experience that stays with you. For anyone who rode the barks in their childhood, memories will come flooding back when they return. The trick waterfall, in particular, seems to have a way of unlocking those lost memories.

Each season in the gorge has its own charm. There's always something new to discover here. Beyond the boat ride, the hiking trails have plenty to offer and it pays to keep one's eyes open. A walk through the gorge is a great way to relax and escape from the daily grind.

We maintain a friendly, professional atmosphere for all visitors, and their pets too. Our trained, experienced staff will take care of you throughout your trip while sharing entertaining anecdotes from the history of the gorge.



The village of Hřensko has invested in improvements to the gorge. A new gazebo, *Elisalex*, on the site of the viewing point is named for the wife of Edmund Clary Aldringen, who opened the gorges to the public. And a new structure shelters the campfire area in the Edmund Gorge.



The Wild Gorge

Though the boat ride here is shorter (and the fare lower) the natural scenery of the hiking trails here is remarkable. It continues from Edmund Gorge, allowing visitors to pass through the entire Kamenice River valley. The Wild Gorge is popular with those in the know.



Visitors can pick up a map of the gorges at parking lots and information centers in the village to help them find their way.

WC

Refreshments and clean toilet facilities are available in the cabin at Edmund Gorge.



www.ihrensko.cz



Unforgettable views in Jetřichovice

The twisting trail through the Jetřichovice cliffs is a beautiful hike for nature lovers, hikers, and photographers. There are several viewpoints along the way that will literally take your breath away, whether you've set out to catch the sunrise, headed off with the kids for the afternoon, or want to enjoy a romantic sunset with someone special... Don't delay, come and see for yourself!

www.obec-jetrichovice.cz

USEFUL INFO

Total distance: 6 km
Difficulty: Medium
Equipment: Sturdy hiking shoes, camera
Not recommended for: Bikes, strollers, wheelchairs



Mariina Vyhlička observation point

The signpost in Jetřichovice points the way – 1.5 km along the red trail to Mariina Vyhlička. You'll pass the lovely, old sanatorium building, now abandoned, and enter the woods, where you'll climb a few dozen stone steps and follow the path to your first stop – the queen of the Jetřichovice scenic points, Mariina Vyhlička.

"THE SUMMIT, WITH AN ELEVATION OF 428 METERS, WAS EQUIPPED WITH A STAIRWAY IN THE 19TH CENTURY AND IN 2006 A NEW SHELTER WAS BUILT AT THE TOP, REPLACING AN OLDER WOODEN STRUCTURE THAT WAS DESTROYED BY FIRE A YEAR EARLIER. IT WAS NAMED IN HONOR OF THE COUNTESS MARIE ANNA KINSKY BY HER SPOUSE, FERDINAND KINSKY, LORD OF THE ESTATE."

Vilemínina Stěna bluff

Once you've drunk in the view, taken some photos, and had a rest, you'll continue on along the red trail to Vilemínina Stěna. Your next destination is only 700 meters away, just a short walk. From Vilemínina Stěna you can see Jetřichovice and Růžovský Vrch.

"THE BLUFF, AT 439 METERS, WAS ORIGINALLY CALLED BLACK BLUFF. IT WAS RENAMED IN THE 19TH CENTURY IN HONOR OF WILHELMINA KINSKY, WHO THE ESTATE THEN BELONGED TO. A GAZEBO IN THE FANCIFUL FORM OF A HERMIT'S HUT WAS BUILT AT THE TOP, BUT IT LATER FELL INTO DISREPAIR."

Rudolfův Kámen rock

From Vilemínina Stěna, follow the red trail on to the third extraordinary view – Rudolfův Kámen. The walk is about one kilometer, and along the way there are markers with information about the rock formations. The signpost at Rudolfův Kámen bears a warning to visitors that the path to the top is difficult; it consists of several metal ladders and some wooden stairs. It takes about ten minutes to scramble to the top, where there is a shelter that holds a portrait of Count Rudolph Kinsky.

"THE VIEWPOINT, AT 484 METERS, WAS ORIGINALLY KNOWN AS 'HIGH ROCK.' A SHELTER WAS BUILT AT THE TOP IN 1824 AS A FIRE WATCH FOR WOODSMAN JOHANNE RAMISCH, WHO HELPED INSTALL THE ACCESS PATH."



And back again

After scrabbling back down to the signpost, continue along the red trail to the cross-roads at Pohovka, about one kilometer. There the trail changes to green, which you'll follow all the way to Jetřichovice two kilometers away. On arrival, there are plenty of local pubs and restaurants to choose from.

Or continue on...

If you haven't had enough of the national parklands, you can follow the nature trail from Pohovka to the signpost at Česká Silnice, and from there take the red trail to the Šaunstejn ruins and Malá Pravčická Brána arch.



Jetřichovice
information center
Jetřichovice 16 / 407 16
+420 777 819 916



Bus Line schedule
www.kr-ustecky.cz

Your trip starts and ends in the village of Jetřichovice, about 20 km outside of Děčín. There's a visitor information center and a free parking lot; for those who aren't travelling by car, there's a bus stop on the 436 line that runs here from Děčín.

Děčín area observation towers



Sokolí Vrch in Dobrná

This telecommunications tower in the village of Dobrná, between Huntířov and Folknáře, was built in 2004 and has a viewing platform that is open to the public. At a height of 34 m, it is the second tallest observation tower in northern Bohemia. The climb of 162 steps to the top is rewarded with a sweeping view of the Děčín and Ústí area. You can drive up to the tower or take bus 212 and get off at the final stop (Děčín-Folknáře) from which it's a 2 km walk through the woods.

162 stairs

JUL – AUG
**OPEN DAILY
10 AM – 8 PM**

ENTRY

Adult
Youth, seniors, students
Children 6 and under

30 CZK
20 CZK
FREE

50.780642N,
14.271693E

WHILE YOU'RE HERE

Take a stroll to Brložec, about 2 km east of Dobrná, to see the old windmill.

May – Jun, 10 AM – 5 PM daily except Mon; Apr and Nov, weekends and holidays or by prior arrangement (tel. +420 775 683 714). The tower is usually open on New Year's Day 10 AM – 4 PM.



Janov observation tower

At Janov, just 15 km from Děčín, there's a 40-meter telecommunications tower with an observation platform. Hikers can follow the yellow hiking trail from Hřensko, but it's also accessible by bus or car. The tower offers a nice view of Děčínský Sněžník, the Stříbrné Stěny cliffs, Pravčická Brána arch, Růžovský Vrch, the Lusatian Mountains, and parts of Saxony. The observation tower is operated by Nord Bohemia Golf, which owns the neighboring golf course.

OPEN DAILY

FREE ADMISSION

50.860902N, 14.270623E

WHILE YOU'RE HERE

It's an easy walk along the paved road to nearby Hřensko, a base for visiting Bohemian Switzerland's most famous sights – Pravčická Brána arch and the river gorges. The road in the opposite direction, towards the village of Janov, is popular with amateur cyclists and is the site of Janovský Trhák, an uphill bike race held every April.

www.rumburk.cz

Vlčí hora

Six kilometers outside of Rumburk, at an elevation of 581 meters, lies Vlčí Hora with its four-sided watch-tower. The wooded hill on which the tower stands is constituted of basalt with some magnetite, which can divert a compass needle by as much as 40 degrees. The tower affords a 360-degree view of Bohemian and Saxon Switzerland, the Lusatian and Ore Mountains, and the Elbe Sandstones. It was built in 1889 by the Mountain Club for Northernmost Bohemia, designed by Josef Hampel. It is the oldest observation tower in the Šluknov spur. A roof was built over the viewing terrace in 1909, increasing the tower's height to 16 meters. The yellow trail leads from Rumburk to Vlčí Hora.

WHILE YOU'RE HERE

Visit the Nobilis Tilia shop at Vlčí Hora to shop for organic aromatherapy products.

Oct – Apr, weekends and holidays
10 AM – 3 PM (closed Dec 24 and 31)

MAY – SEPT
TUE – SAT 10 AM – 6 PM

SUN & HOLIDAYS
10 AM – 3 PM

ENTRY

Adults 15 CZK
Youth, seniors, students 8 CZK
Children 6 and under FREE

50.940176N
14.465323E

82
stairs



PRAŽÍRNA

CAFFE 08[®]



FAMILY-OWNED ROASTER
IN BOHEMIAN SWITZERLAND

www.caffe08.cz



**FALKEN
STEJN**



WWW.PIVOFALKENSTEJN.CZ



**FALKENŠTEJN.
MORE THAN A BREWERY**

BREWERY • LODGINGS • RESTAURANT

ORIGINÁLNÍ RUČNĚ VYRÁBĚNÉ ČOKOLÁDOVÉ BONBONY
aneb **BEZ ČOKOLÁDY NEODJÍŽDĚJTE!**

Jordan
Vyškovská čokoláda z Děčína



Děčínskou čokoládu si rozhodně nenechte ujít. Její lahodnou chuť a nepřeberné množství náplní můžete ochutnat v kavárně v centru Podmokel. Ta totiž nabízí skvělé bonbony z malé rodinné manufaktury.

HUSOVO NÁMĚSTÍ 117, DĚČÍN IV

CIDONIO jams and marmalades are concocted by Štěpána Holcmanová right here in Děčín. She can cook down almost anything that grows on a tree or a bush, in the garden or in the woods. She gets fruit from regional growers but also works with exotic fruits from foreign climes. And she conceives surprising combinations with various herbs, spices, and liqueurs. The unique flavors she achieves have earned Štěpánka recognition at international competitions as far away as Great Britain.



Best jams and marmalades – here in Děčín



www.cidonio.cz

For sale
in visitor
information
centers

**Děčín's
cultural
café**



**COFFEE
&
BOOKS**

Pohraniční 3
405 02 Děčín 1



*místo lidských
setbání*

We are a human gathering place, where you can be the hero of your own life story. Together we create community in Děčín. Events percolate here to make up our lives. We're here for coffee-lovers, book-lovers, culture-lovers... anyone who loves life.



We're a great place to kick off excursions or get some work done. We serve fantastic breakfasts, sandwiches, chocolate "mouse," coffee, chocolates, soft drinks, wine, prosciutto, cheese, olives, sun-dried tomatoes, and other delicacies. All in a quiet setting where you can chat or read. Visitors will find information and tips for day trips around town and in Bohemian Switzerland National Park.

OPENING HOURS
MON – FRI 7 AM – 6 PM / SAT 8 AM – 6 PM

www.coffeeabooks.cz



Vinotéka Děčín
Křížová 435/9
405 02 Děčín 1

novotnadc@seznam.cz

WWW.VINOTEKADECIN.CZ

A glass of wine by the castle

Vinotéka Děčín has been a traditional wine cellar for many years, offering a range of Bohemian and Moravian vintages.

Most of our Bohemian wines come from local vineyards in Malé Žernoseky, Velké Žernoseky, Louny, Žalhostice, Třebívlice, Roudnice nad Labem, and Mělník. Our Moravian wines represent roughly 35 vineyards from across Moravia. We also have select wines from Chile, Argentina, New Zealand, Mexico, the USA, South Africa, Romania, and Bulgaria.

We offer twice-monthly wine tastings with a guest wine-maker. We also host regular tastings for varietal wines.

In the summer months we open a shaded outdoor seating area in the pedestrian zone just below the castle rose garden. We also serve excellent local coffee from CAFF608.

OPENING HOURS
MON – FRI
9 AM – 6 PM
SAT 9 AM – NOON

**We accept VISA,
MASTERCARD,
and MAESTRO.**

www.vinotekadecin.cz

Facebook /
vinotekadecin

Soothing aromas for every day

Bohemian-Saxon Switzerland is, without a doubt, a highly attractive destination. It's the site of Bohemia's first nature trail, known by the name of its founder, Rudolf Koegler, who was a native of the area with a passion for geology and hiking. Beyond the usual tourist attractions, the astute visitor will find a range of interesting businesses whose products they may already use without even knowing it. The legendary fish-shaped pocketknife? It's from nearby Mikulášovice. Nobilis Tilia organic cosmetics? They come from Vlčí Hora just outside of Krásná Lípa.



www.nobilis.cz

Nobilis Tilia
Vlčí Hora 147
407 46 Krásná Lípa
nobilis@nobilis.cz

Nobilis Tilia develops, produces, and sells natural, organic cosmetics with aromatherapy applications. Over the past twenty years they have introduced products for all skin and hair types, and have come out with natural products for infants, children, and expectant mothers. Today, Nobilis Tilia offers the largest selection of products on the market with CPK and CPK BIO certification.



TOURIST MAGAZINE 2018



Vlčí Hora offers a great view far and wide thanks to the observation tower at its summit. The nearby forest spring, Veronika, offers a refreshing stop for hikers.

From the very beginning, the company has looked beyond product development and sales. An integral part of its philosophy for sustainable enterprise is support and development for the neighboring area combined with philanthropic, awareness, and educational projects. On Vlčí Hora itself, you'll find a unique botanical garden founded on the principal of permaculture. It is open year round with regular guided tours. Among the species cultivated here are medicinal herbs, roots and other useful plants both common and obscure. Visitors learn about the mutual interaction of plants and their environment. The garden is also a vital part of the annual Midsummer Festival every June, hosting various talks and workshops.



The new visitors center on Vlčí Hora offers pleasant year-round seating in its herbal teahouse as well as a Nobilis Tilia shop. The construction of the visitor center several years ago was one of Nobilis Tilia's other projects for support and development of the local area. The visitor center is located in an old school building that had been abandoned for decades. Besides the shop and tea house, careful renovations have carved out facilities for lectures and workshops. There are seminars and courses for the specialized and general public on subjects such as aromatherapy, massage, and spa cosmetics. A schedule of upcoming events is available on the Nobilis Tilia website.

OPEN YEAR ROUND



TOURIST MAGAZINE 2018

Pivovar Shopping Center

This unique, multi-purpose complex combines modern architectural elements in a historical brewery.



WWW.CENTRUMPIVOVAR.CZ

A hopping part of the Pivovar center is the Hopsarium, a place where kids can act like adults and adults can act like kids. There's a fully equipped mini-motorway with scooter cars, a huge jungle gym, trampolines, a bouncy castle, table football, and interactive games like the X-box Kinect. It's a great adventure with thrills for the whole family. The bistro in the Hopsarium serves great coffee and desserts.

Visitors can see how the special brews are made; just schedule a microbrewery tour, ideally followed by a tasty dinner in the Pivovar restaurant.



Since the end of the 17th century the local brews have carried nautical names. Traditional beers like Kapitán, Korzár, Admirál, Bukanýr, and Kotva (anchor) were produced here until the brewery shut down in 1997. By then the property had already been listed as a cultural landmark. After complete renovations and modernization the old brewery was reborn as a shopping and cultural center in April 2014 and the brewing tradition was renewed. The most popular beer served here today is Kapitán lager. But the whole crew deserves a taste: the slightly stronger Admirál, dark Kormidelník, and Speciál.



More fun is in store for kids in the children's corner with its experienced fun-time staff. For children aged 3 to 10 years. Plenty of fun for everyone!

RESERVATIONS
+420 605 996 764 | info@pivovarskarestaurace.com

Nestled in the old brewery stable, with its vaulted brick ceilings, shine two copper tanks. The aroma of freshly brewed beer welcomes visitors as they take their seats to order a pint. Welcome to Pivovar microbrewery and restaurant.

RESERVATIONS
+420 777 577 918
info@pivovarskarestaurace.com

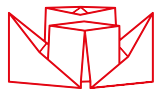
Browse your holiday photos in style ;)

Děčín swag is available at an info center near you



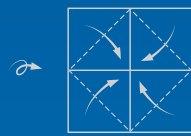
Meet the team

Děčín tourism



MAKE YOUR OWN STEAMBOAT

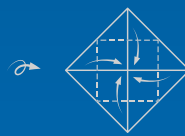
How to:



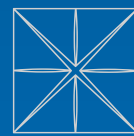
Fold the corners
to the middle (start
with paper face down)



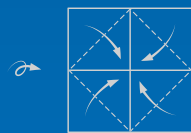
Turn over



Fold the corners
to the middle again



Turn over



Fold the corners
a third time



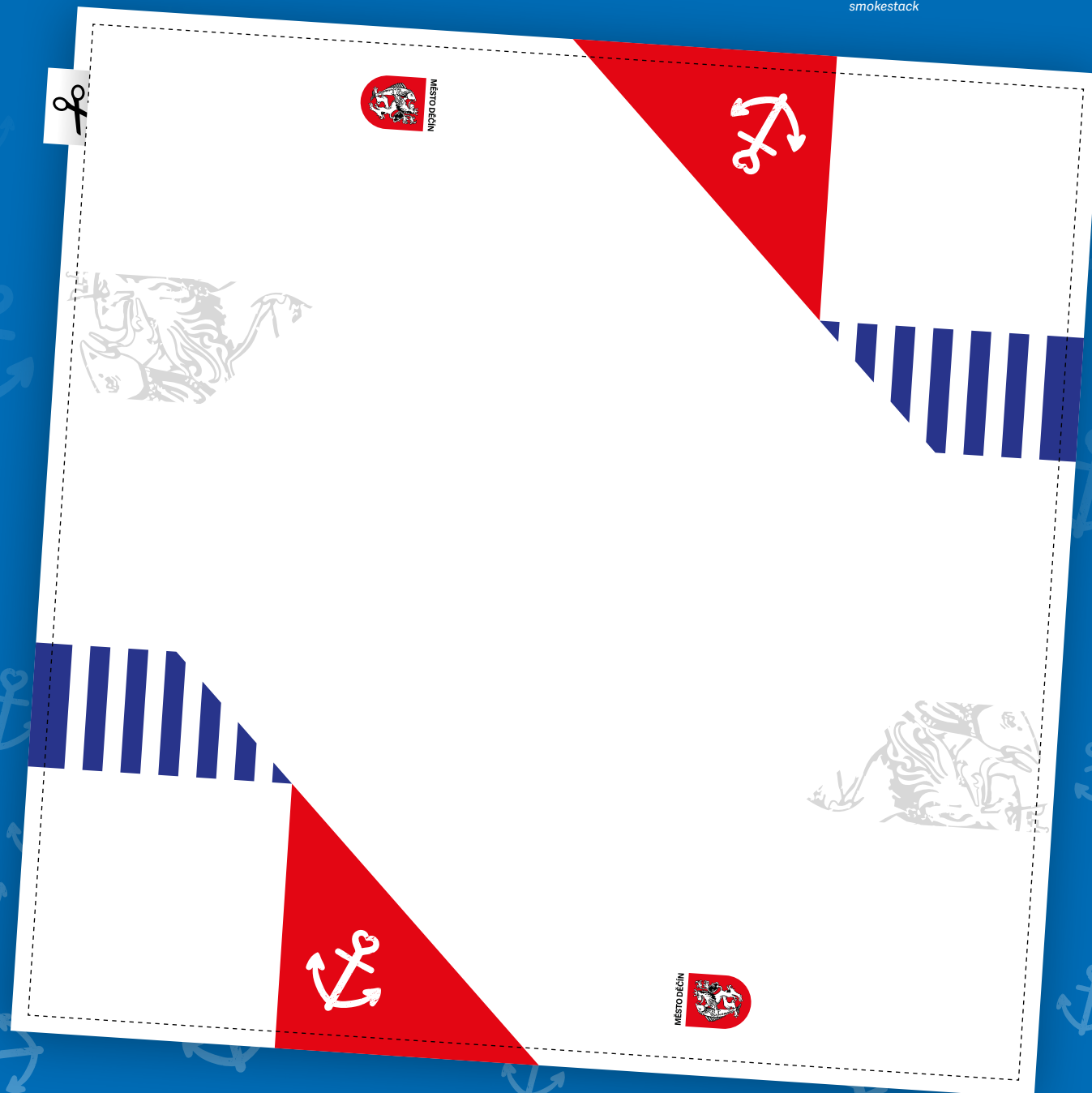
Turn over



Pull open the gap in the
blue striped squares,
creasing to form the
smokestack



Fold in half and
pull out the ends
(red)



www.idecin.cz

[decinproturisty](https://www.facebook.com/decinproturisty)

Visitor information center

Karla Čapka 1441/3 | 405 02 Děčín | Czech Republic | **T** +420 412 532 227 | **E** info@idecin.cz

Visitor information center – main rail station

Čsl. mládeže 89/4 | 405 02 Děčín 1 | Czech Republic | **T** +420 727 975 773 | **E** info@idecin.cz

● České
● Sächsische

● Švýcarsko
● Schweiz

CzechTourism

Photos: P. Špánek, V. Sojka,
Z. Patzelt, J. Štastrný,
M. Rak, A. Černohous,
M. Úlehlová, internet
Graphics: Studio Maglen s.r.o.
Translation: Beth Tonder

Courtesy of
The City of Děčín
Mírové náměstí 1175/5
405 38 Děčín 4
Czech Republic